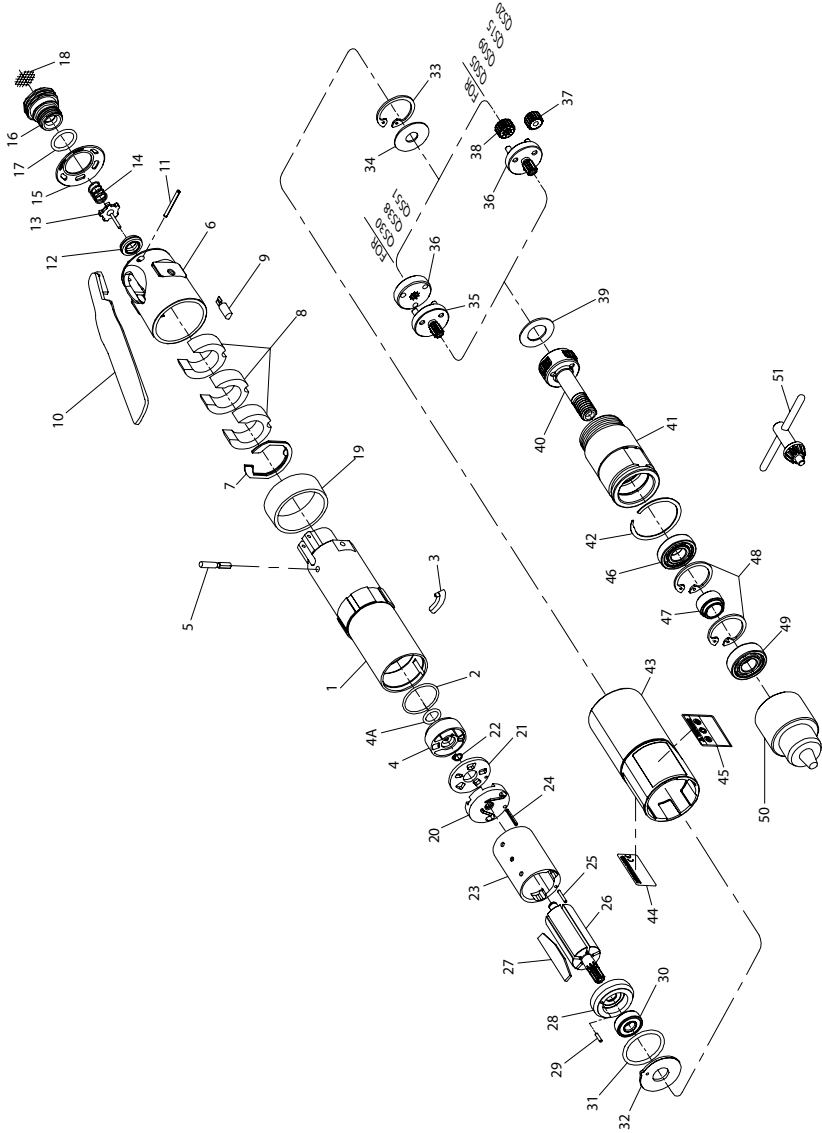


QS Series Air Drill Exploded Diagram



(Dwg. TPA1760)



QS Series Air Drill Parts List

Item	Part Description	Part Number	Item	Part Description	Part Number
1	Motor Housing	TRL-40	34	Gear Head Spacer	TRH-81
2	Housing O-Ring	TRH-104	35	Planet Gear Head Drive Plate (for Series QS30, QS38 and QS51)	TRH-17
3	Housing Plug	TRD-982			
4	Reverse Valve Assembly	TRH-A3291	36	Planet Gear Head Assembly (includes gear shafts)	
4A	Reverse Valve Seal	R1A-159		for Series QS05, QS09, QS30 and QS51	TRH-A2169-16
5	Throttle Plunger	TRL-302		for Series QS15	TRH-A2169-12
6	Back Cap	TRL-231		for Series QS38	TRH-A216-12
7	Back Cap Gasket	TRL-A283		for Series QS20	TRH-A2169-10
8	Muffler Element (3)	TRL-311	37	Planet Gear (3 for each Gear Head)	
9	Memory Chip (only for models ending in D having a memory chip)	TRH-800		for Series QS05 and QS09	TRH-10-16
				for Series QS15	TRH-10-12
10	Throttle Lever	TRL-273		for Series QS20	TRH-10-10
11	Throttle Lever Pin	TRL-98	38	Gear Head Pinion	
12	Throttle Valve Seat	TRH-303		for Series QS15	TRH-17-18
13	Throttle Valve	TRD-A302		for Series QS20	TRH-17-21
14	Throttle Valve Spring	TRL-51	39	Planet Gear Head Spacer	
15	Exhaust Diffuser	TRH-123	40	Spindle Assembly (includes all spindle gearing)	
16	Inlet Bushing Assembly			for Series QS05 and QS30	TRD-A8-16
	for 1/4-18 NPT thread	TRH-A465		for Series QS38	TRD-A8-15
	for 1/4-19 BSPT thread	TRH-A465-B		for Series QS09, QS15 and QS51	TRD-A8-12
17	Inlet Bushing Seal	AF120-290		for Series QS20	TRD-A8-10
18	Inlet Screen	TRH-61	41	Gear Case	
19	Housing Plug Cover	TRD-981	42	Grip Retainer	
20	Rear End Plate Assembly (includes rear rotor bearing)	TRH-A12-1	43	Housing Grip	
			44	Nameplate	
21	Rear End Plate Face Plate	TRH-12-2	45	Warning Label	
22	Rear End Plate Assembly Retainer	8SL-305	46	Spindle Bearing	
23	Cylinder Assembly	TRH-A3-D	47	Spindle Bearing Spacer	
24	Cylinder Rear Alignment Pin	TRH-98	48	Bearing Stop (2)	
25	Cylinder Front Alignment Pin	TRH-98-1	49	Spindle Cap Bearing	
26	Rotor	TRH-53	50	Drill Chuck (1/4")	
27	Vane Packet (set of 5 Vanes)	TRH-42-5	51	Chuck Key	
28	Front End Plate Assembly	TRH-A11	*	Drill Chuck Guard Kit (1/4" optional)	
29	End Plate Alignment Pin	TRH-98-2	*	Suspension Bail	
30	Front Rotor Bearing	TRH-24	*	Piped-Away Exhaust Kit (optional)	
31	Motor Seal	TRH-211	*	Tune-Up Kit (Includes the following items: 2, 4A, 7, 8, 12, 13, 14, 17, 18, 22, 27, 29, 30 and 31)	
32	Motor Clamp Washer	TRH-207		Q2-TK1	
33	Gear Retainer	TRH-28			

* Not illustrated.

Parts and Maintenance

When the life of the tool has expired, it is recommended that the tool be disassembled, degreased and parts be separated by material so that they can be recycled.

Tool repair and maintenance should only be carried out by an authorized Service Center.

Refer all communications to the nearest **Ingersoll Rand** Office or Distributor.

Related Documentation

For additional information refer to:

Air Drill Product Safety Information Manual 04580353.

Air Drill Product Information Manual 16572042.

Air Drill Maintenance Information Manual 16576332.

Manuals can be downloaded from ingersollrandproducts.com

