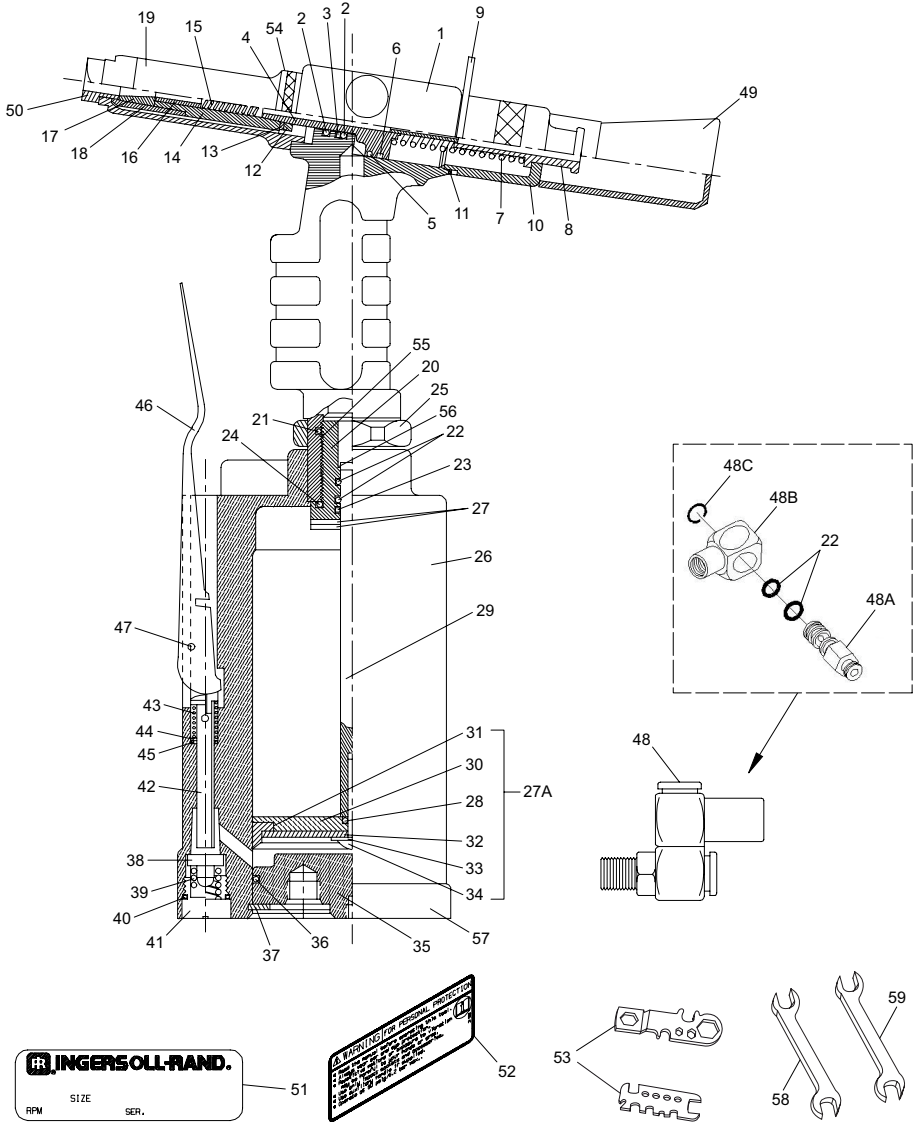


LA415 Hydraulic Riveter - Sectional Diagram



(Dwg. TPB935-1)



16574816
Edition 4
February 2018

LA415 Hydraulic Riveter - Parts List

Item	Part Description	Part Number	Item	Part Description	Part Number
1	Hydraulic Frame	LA415-1	35	Cap	LA415-40
2	O-Ring	LA415-2	36	O-Ring	LA415-41
3	Ring	LA415-4	37	Clip Ring	LA415-42
4	Plunger	LA415-5	38	Plate	LA415-43
5	O-Ring	LA415-6	39	Spring	LA415-44
6	Ring	LA415-11	40	O-Ring	LA415-45
7	Spring Assembly	LA415-A8	41	Valve Ring	LA415-46
8	Guide Tube	LA415-10	42	Valve Tube	LA415-47
9	Hanger	LA415-13	43	Spring	LA415-48
10	Rear Gland	LA415-14	44	Washer	LA415-49
11	O-Ring	LA415-15	45	O-Ring	LA415-50
12	Nut	LA415-16	46	Lever	LA415-51
13	Washer	LA415-17	47	Roll Pin	LA415-52
14	Coupler	LA415-18	48	Swivel Inlet joint (includes 22, 48A, 48B, 48C)	LA415-53
15	Spring	LA415-19	48A	Male inlet Body	LA415-61
16	Jaw Pusher	LA415-20	48B	Female inlet body	LA415-62
17	Jaws	LA415-21	48C	Snap Ring	LA415-63
18	Jaw Housing	LA415-22	22	O-Ring	LA415-26
19	Head	LA415-23	49	Deflector	LA415-54
20	Rod Guide	LA415-24	50	Nose Pieces	---
21	O-Ring	LA415-25		(3/32" [2.4 mm])	LA415-56
22	O-Ring	LA415-26		(1/8" [3.2 mm])	LA415-57
23	Ring	LA415-27		(5/32" [4.0 mm])	LA415-58
24	O-Ring	LA415-28		(3/16" [4.8 mm])	LA415-59
25	Lock Nut	LA415-29		(1/4" [6.4 mm])	LA415-60
26	Cylinder Body	LA415-30	51	Nameplate	LA415-301
27	Ring	LA415-31	52	Warning Label	EU-99
27A	Piston Assembly (includes 28, 30, 31, 32, 33, 34)	LA415-32	53	Wrench (2)	LA415-55
28	Seal	LA415-33	54	Lock Nut	LA415-64
30	Plate	LA415-35	55	O-Ring	LA415-65
31	Piston Seal	LA415-36	56	O-Ring	LA415-67
32	Plate	LA415-37	57	Rubber Boot	LA415-66
33	Washer	LA415-38	58	12 X 14 mm Wrench	LA415-68
34	Nut	LA415-39	59	17 X 19 mm Wrench	LA415-69
29	Piston Stem	LA415-34			

Parts and Maintenance

When tool life has expired, it is recommended that the tool be disassembled, degreased and parts separated by material for proper recycling. Tool repair and maintenance should only be carried out by an authorized Service Center.

Refer all communications to the nearest **Ingersoll Rand** office or distributor.

Related Documentation

Manuals can be downloaded from ingersollrandproducts.com

For additional information, refer to:
 Product Safety Information Manual 16576555.
 Product Information Manual 03539772.

