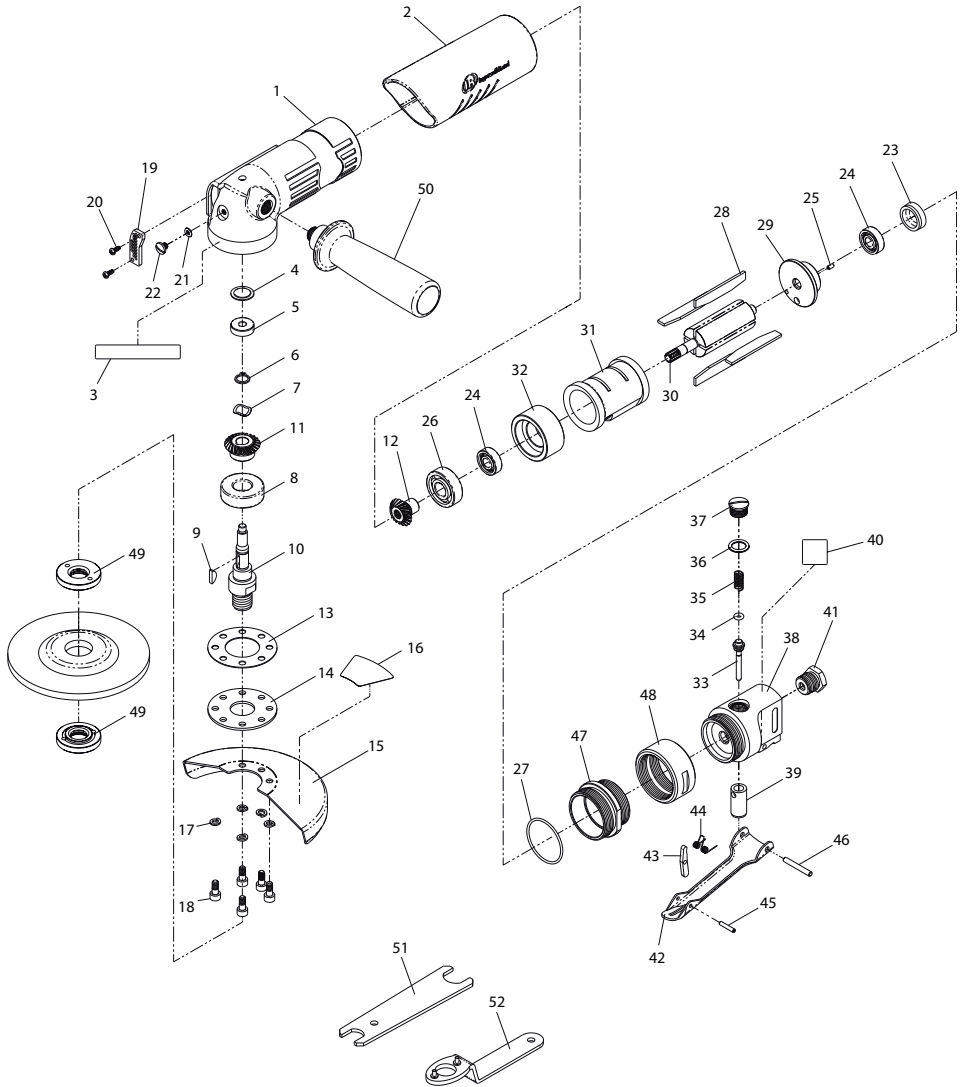


Model 422G Air Angle Grinder - Exploded View



(Dwg. 45661253)



Model 422G Air Angle Grinder - Parts List

Item	Part Description	Part Number	Item	Part Description	Part Number
*	Housing Kit	422G-A40	29	Rear End Plate	422G-12
1	Housing	---	30	Rotor	422G-53
2	Grip	422G-747	31	Cylinder	422G-3
3	Warning Label	422G-99	32	Front End Plate	422G-11
*	Arbor Kit	422G-K105	*	Throttle Valve Kit	422G-K302
4	Seal Plate	---	33	Valve Stem	---
5	Ball Bearing	---	34	O-Ring	---
6	Retaining Ring	---	35	Valve Spring	---
7	Wave Washer	---	36	O-Ring	---
8	Ball Bearing	---	37	Throttle Lever Plug	---
9	Key	---	*	Throttle Valve Housing Assembly	422G-A409
10	Arbor	---	38	Throttle Valve Housing	---
*	Bevel Gear Kit	422G-K552	39	Bushing	---
11	Bevel Gear	---	40	Label	422G-300
12	Pinion Gear	---	41	Inlet Bushing	422G-565
13	Angle Housing Gasket	422G-83	*	Throttle Lever Assembly	422G-A400
14	Angle Housing Cover	422G-532	42	Throttle Lever	---
*	Wheel Guard Kit	422G-K106-5	43	Throttle Lever Lock	---
15	Wheel Guard	---	44	Torsion Spring	---
16	Guard Warning Label	MG1-99G	45	Spring Pin	---
17	Spring Washer (5)	---	46	Throttle Lever Pin	---
18	Guard Screw (5)	---	47	Lock Ring	422G-305
*	Guard Screw Kit	422G-K638	48	Coupling Nut	422G-304
17	Spring Washer (5)	---	49	Flange Nut (2)	422G-338
18	Guard Screw (5)	---	50	Side Handle	422G-48
*	Exhaust Deflector Kit	422G-K23	51	Wrench A	422G-26
19	Exhaust Deflector	---	52	Wrench B	422G-27
20	Screw	---			
21	O-ring	---			
22	Screw	---			
*	Tune-up Kit	422G-TK			
23	Bearing Cap	---			
24	Ball Bearing (2)	---			
25	Spring Pin	---			
26	Ball Bearing	---			
27	O-Ring	---			
28	Vane Pack (4)	422G-42-4			

* Not Illustrated.

Parts and Maintenance

When the life of the tool has expired, it is recommended that the tool be disassembled, degreased and parts be separated by material so that they can be recycled.

Tool repair and maintenance should only be carried out by an authorized Service Center.

Refer all communications to the nearest **Ingersoll Rand** Office or Distributor.

Related Documentation

For additional information refer to:

Product Safety Information Manual 04584959.

Product Information Manual 45661147.

Manuals can be downloaded from www.ingersollrandproducts.com.

