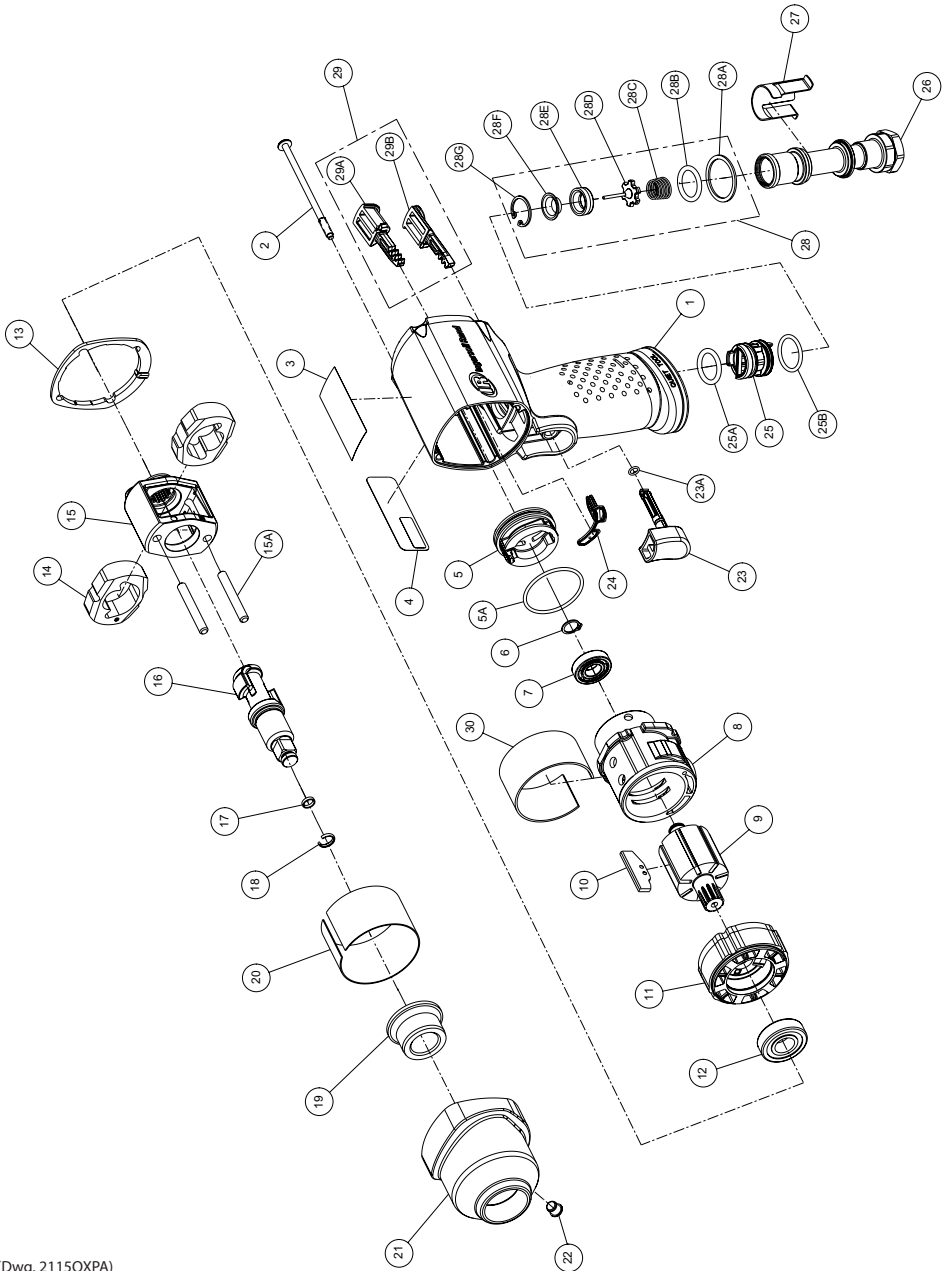


# 2115QXPA Air Impactool™ - Exploded View



(Dwg. 2115QXPA)



## 2115QXPA Air Impactool™ - Parts List

Item	Part Description	Part Number	(CCN)	Item	Part Description	Part Number	(CCN)
	Housing Assembly	2115QXPA-A40	(2115QXPA-A40)		Reverse Valve Assembly	2131-A329	(04167896)
1	Housing	---	---	25	Reverse Valve	---	---
3	Warning Label	---	---	25A	O-Ring, Reverse Valve (Top-Black)	---	---
4	Information Label	---	---	25B	O-Ring, Reverse Valve (Bottom-Blue)	---	---
24	Gasket, Motor	---	---		Inlet Bushing Assembly	2135-D565A	(45531787)
	Reverse Valve Assembly (includes 25, 25A, 25B)	---	---	26	Inlet Bushing	---	---
29	Button Kit	---	---	27	Inlet Clip	2131-57	(04167862)
2	Screw, Hammer Case (4 required)	2115-638	(80126170)	28	Inlet Parts Kit	2135-K303	(45535051)
3	Warning Label	WARNING-2-99	(04203139)	28A	Washer	---	---
4	Information Label	2115QXPA-300	(2115QXPA-300)	28B	O-Ring, Seal	---	---
	Power Regulator Assembly	2115-D249A	(45561735)	28C	Throttle Spring	---	---
5	Power Regulator	---	---	28D	Throttle Valve	---	---
5A	O-Ring, Power Regulator	---	---	28E	Valve Seat	---	---
6	Retaining Ring	4E-6	(03079530)	28F	Seat Support	---	---
7	Ball Bearing (Cylinder)	R00H-97	(03100021)	28G	Retainer	---	---
8	Cylinder	2112-3	(04679056)	29	Button Kit	2115-K75RD	(45583465)
9	Rotor	2115-53	(45504990)	29A	Forward Button	---	---
†10	Vane Pack (set of 7)	2115-42A-7	(45583473)	29B	Reverse Button	---	---
11	End Plate	2112-11	(04679064)	30	Silencer	2115Q-311	(45587342)
12	Ball Bearing (End Plate)	2131-97	(04172813)	*	Tune-Up Kit	2115-TK2	(45585189)
†13	Hammer Case Gasket	2115-36	(45550779)	5A	O-Ring, Power Regulator	---	---
	Hammer Mechanism Kit	2115-THK2	(45585932)	6	Retaining Ring	---	---
14	Hammer (2)	---	---	7	Ball Bearing (Cylinder)	---	---
15	Hammer Frame	---	---	10	Vane Pack (set of 7)	---	---
15A	Hammer Pin (2)	---	---	12	Ball Bearing (End Plate)	---	---
	Anvil Assembly	2112-A626	(10319895)	13	Hammer Case Gasket	---	---
16	Anvil	---	---	23A	O-Ring, Trigger	---	---
17	O-Ring	---	---	24	Gasket, Motor	---	---
18	Socket Retainer	---	---	25A	O-Ring, Reverse Valve (Top-Black)	---	---
†	Socket Retainer Kit	2115-K425	(80107659)	25B	O-Ring, Reverse Valve (Bottom-Blue)	---	---
17	O-Ring	---	---	28	Inlet Parts Kit	---	---
18	Socket Retainer	---	---	*	Kit, Piped-Away Exhaust	2115-K284	(45612637)
19	Bushing, Hammer Case	2112-641	(04679114)	*	Inlet Clip Removal Tool	2131-322	(04263745)
	Hammer Case Assembly	2115AL-D727A	(45586443)	†*	Air Care Kit (grease gun, grease, oil)	115-LBK1	(04616108)
19	Bushing, Hammer Case	---	---	*	Grease (replacement tube for -LBK1)	115-4T	(04616157)
20	Sleeve, Hammer Case	---	---	*	Air Tool Oil (4 oz. bottle)	10Z4	(03875671)
21	Hammer Case	---	---	*	Grease (1 lb can)	105-1LB	(04279147)
22	Grease Fitting	---	---	*	Grease (8 lb can)	105-8LB	(04264875)
22	Grease Fitting	1305R-188	(03039930)	*	Grease Gun	R000A2-228	(03095015)
†	Trigger Assembly	2135-D93	(80096704)				
23	Trigger	---	---				
23A	O-Ring, Trigger	---	---				
†24	Gasket, Motor	2112-283	(04679015)				

\* Indicates not illustrated.

† Indicates common-wear parts. Maintain stock to reduce downtime.

## Parts and Maintenance

When tool life has expired, it is recommended that the tool be disassembled, degreased and parts separated by material for proper recycling.

Tool repair and maintenance should only be carried out by an authorized Service Center.

Refer all communications to the nearest **Ingersoll Rand** office or distributor.

## Related Documentation

Manuals can be downloaded from [ingersollrandproducts.com](http://ingersollrandproducts.com)

For additional information, refer to:

Product Safety Information Manual 04580916.

Product Information Manual 47598152001.

Declaration of Conformity 47626564001.



ingersollrandproducts.com  
© 2017 Ingersoll Rand

**47598153001**  
Edition 2  
December 2017