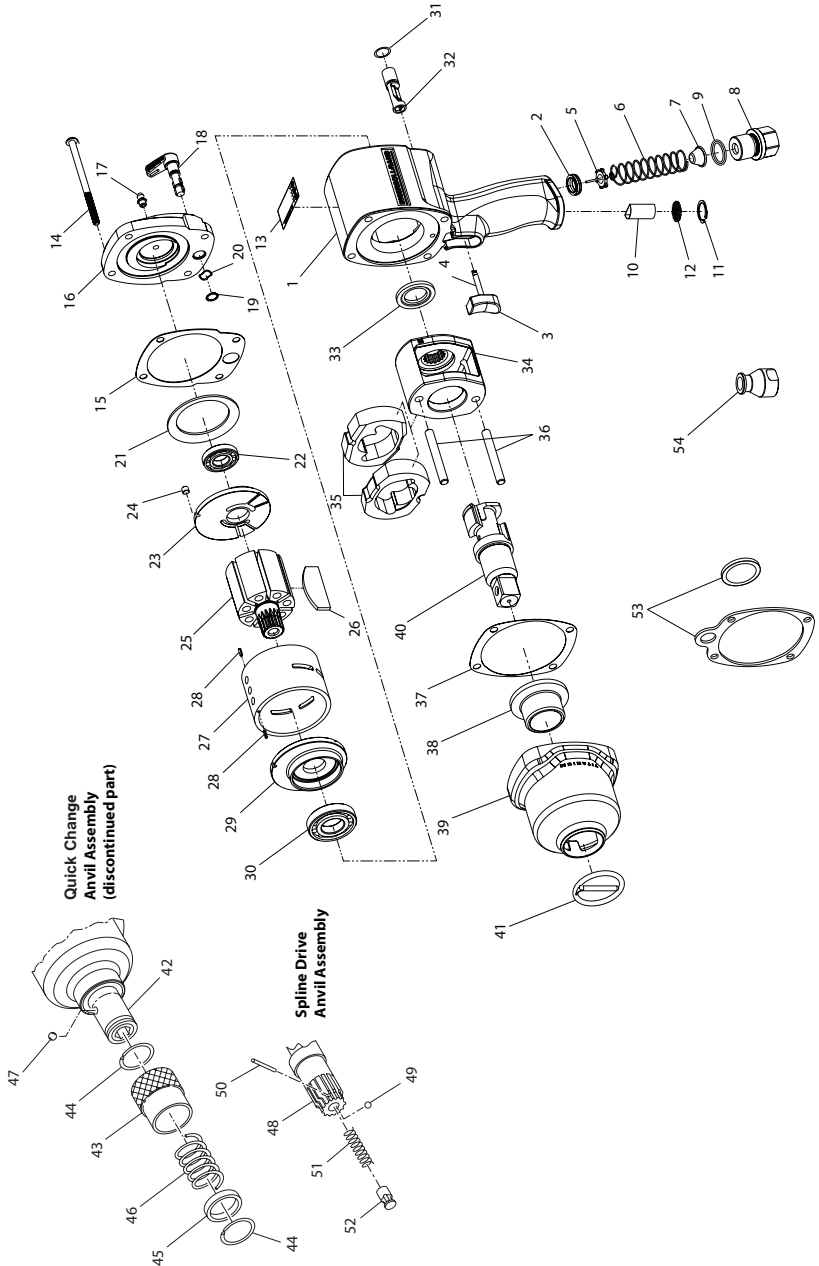


2925Ti Series Air Impact Wrench - Exploded View



(Dwg. TPA1580-2)

2925Ti Series Air Impact Wrench - Parts List

Item	Part Description	Part Number	Item	Part Description	Part Number	
	Motor Housing Assembly	2925-A40	29	Front End Plate	2925-11	
1	Motor Housing	2925-B40	30	Front Rotor Bearing	834-24	
2	Throttle Valve Seat	DG230-303	† 31	Reverse Valve O-Ring	023446	
	Trigger Assembly	2161-A93R	32	Reverse Valve	2161-329	
3	Trigger	2161-93R	33	Hammer Frame Washer	2161-706	
4	Trigger Pin	2161-94	34	Hammer Frame	2925-703	
5	Throttle Valve	2921-302	35	Hammer (QTY. 2)	2925-724	
6	Throttle Valve Spring	2161-51	36	Hammer Pin (QTY. 2)	2910-704	
7	Air Strainer Screen	834-61	† 37	Hammer Case Gasket	2161-36	
	Inlet Bushing Assembly	2161-A465A	38	Hammer Case Assembly		
8	Inlet Bushing	2161-465A		for 2925P1Ti, 2925P3Ti, 2925RBP1Ti, and 2925RBP3Ti	2190Ti-D727	
9	Seal	R4-210		for 2925RBP1TiEX	2190TiEX-D727	
10	Muffler Element	202-311		Hammer Case Bushing		
11	Retaining Ring	2161-118		for 2925P1Ti, 2925P3Ti, 2925RBP1Ti, and 2925RBP3Ti	2161-641	
12	Exhaust Deflector	2161-23		for 2925RBP1TiEX	2161EX-641	
13	Warning Label	WARNING-2-99		Hammer Case	2190Ti-727	
*	ATEX Spec Label	ATEX-301A				
14	Backcap Bolt (QTY. 4)	2925-638		40	Anvil	
† 15	Backcap Gasket	2161-739			3/4" Square Drive	2910-726
	Backcap Assembly	2925-A102		1" Square Drive	2910-826	
16	Backcap	2925-102	41	Socket Retainer		
17	Grease Fitting	R1-188		for 3/4" Square Drive	RR100345	
18	Reverse Lever	2925-658		for 1" Square Drive	RR100155	
19	Reverse Lever Snap Ring	2161-28	**	Quick Change Anvil Assembly	<i>discontinued</i>	
20	Reverse Lever Spring	2161-278	42	Quick Change Anvil	---	
21	Motor Clamp Washer	2161-207	43	Retaining Sleeve	---	
22	Rear Rotor Bearing	4E-510	44	Thrust Ring Lock (QTY. 2)	---	
23	Rear End Plate	2925-12	45	Thrust Ring	---	
24	Locating Pin	2920-74	46	Retaining Sleeve Spring	---	
25	Rotor	2925-53	47	Retaining Ball	---	
† 26	Vane Packet (set of 7 vanes)	2925-42-7		No. 4 Spline Drive Anvil	2910-A526	
	Cylinder Assembly		48	Anvil	2910-526	
	for 2925P1Ti and 2925P3Ti	2925-A3	49	Socket Retaining Ball	G601-65	
	for 2925RBP1Ti, 2925RBP3Ti and 2925RBP1TiEX	2925RB-A3	50	Retaining Ball Plunger	910-230	
27	Cylinder		51	Ball Plunger Spring	125R-262	
	for 2925P1Ti and 2925P3Ti	2925-3	52	Plunger Retaining Pin	7L-120	
	for 2925RBP1Ti, 2925RBP3Ti and 2925RBP1TiEX	2925RB-3	53	Hanger Kit	2161-366	
28	Cylinder Dowel (QTY. 2)		54	Piped-Away Exhaust (accepts 1/2"-14 NPT male-fitting)	2161-123	
	for 2925P1Ti and 2925P3Ti	JC3350-538	*	Grease		
	for 2925RBP1Ti, 2925RBP3Ti and 2925RBP1TiEX	JC3350-538		1 lb.	170-1LB	
				8 lb.	170-8LB	

* Indicates not illustrated.

† Indicates common-wear parts. Maintain stock to reduce downtime.

** Part no longer available.

Parts and Maintenance

When tool life has expired, it is recommended that the tool be disassembled, degreased and parts separated by material for proper recycling.

Tool repair and maintenance should only be carried out by an authorized Service Center.

Refer all communications to the nearest **Ingersoll Rand** office or distributor.

Related Documentation

Manuals can be downloaded from ingersollrandproducts.com

For additional information, refer to:

Product Safety Information Manual Form 04580916 and 47559151001 (ATEX).

Product Information Manual Form 16573206.

Product Maintenance Manual Form 04584348.

