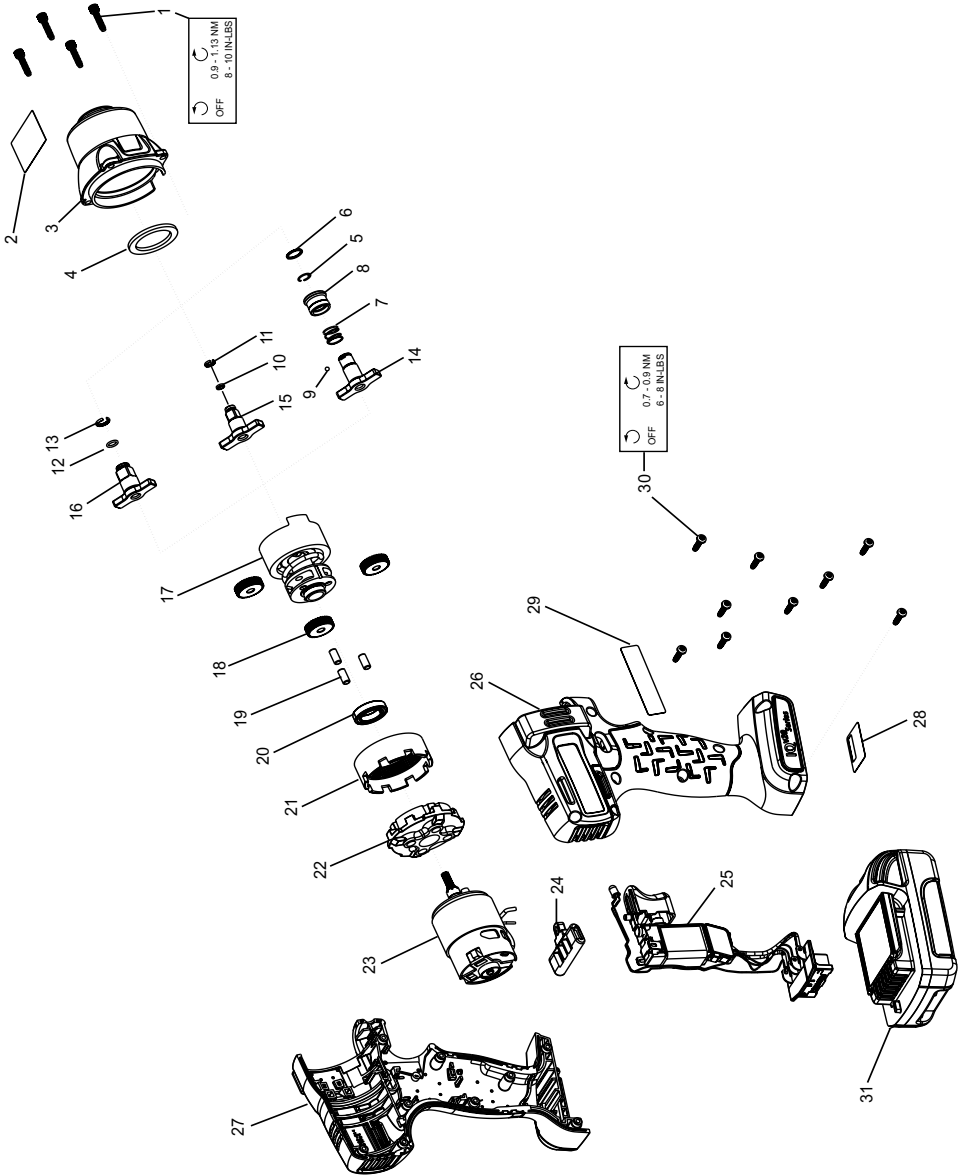


# W5000 Series Cordless Impact Wrench - Exploded View



(Dwg. 48617021)



## W5000 Series Cordless Impact Wrench - Parts List

Item	Part Description	Part Number	(CCN)	Item	Part Description	Part Number	(CCN)
*	Hammer Case Kit	--	--	20	Bearing, Gear Carrier	--	--
*	For W5130	W5130-K727	(48624761)	21	Ring Gear	--	--
*	For W5150	W5150-K727	(47499745001)	22	Ring Gear Holder	--	--
1	Screw, Hammer Case (4 Required)	--	--	23	Electric Motor Kit	W5130-K54	(48624811)
2	Warning Label	--	--	24	Forward/Reverse Actuator	W7150-K75	(48391312)
3	Hammer Case Assembly	--	--	25	Trigger & Battery Connector Kit	W5130-K93	(48624829)
4	Nylon Washer	--	--	*	Housing Kit	W5130-K40	(48624837)
	Bit Retainer Kit For W5110, 1/4-in QC Hex	W5111-K425	(47514327001)	26	Right Housing	--	--
5	Snap Ring	--	--	27	Left Housing	--	--
6	Washer	--	--	28	Serial Number Label	--	--
7	Spring	--	--	29	Information Label	--	--
8	Bit Sleeve	--	--	30	Screw, Housing (9 Required)	--	--
9	Ball	--	--	*	Fastener Kit	W5130-K105	(48624845)
*	Socket Retainer Kit For W5130, 3/8-in SQ Drive	1702-K425	(47533407)	1	Screw, Hammer Case (4 Required)	--	--
10	O-Ring	--	--	30	Screw, Housing (9 Required)	--	--
11	Socket Retainer	--	--	*	Label Kit	W5130-K99	(48624852)
*	Socket Retainer Kit For W5150, 1/2-in SQ Drive	2125QTI-K425	(80107733)	2	Warning Label	--	--
12	O-Ring	--	--	28	Serial Number Label	--	--
13	Socket Retainer	--	--	29	Information Label	--	--
*	Anvil Kit For W5110, 1/4-in QC Hex	W5111-K626	(48626030)	*	Protective Tool Boot	W5130-BOOT	(48624753)
14	Anvil	--	--	*	Grease	--	--
*	Bit Retainer Kit	--	--		IR #105 (1 lb can) for Impact Mechanism and Anvil	105 1 LB	(04279147)
*	Anvil Kit For W5130, 3/8-in SQ Drive	W5130-K626	(48624779)		IR #105 (8 lb can) for Impact Mechanism and Anvil	105 8 LB	(04264875)
15	Anvil	--	--		IR #67 (1 lb can) for Gearing	67 1 LB	(03773009)
10	O-Ring	--	--		IR #67 (8 lb can) for Gearing	67 8 LB	(03820008)
11	Socket Retainer	--	--		Grease Gun	R000A2-228	(03095015)
*	Anvil Kit For W5150, 1/2-in SQ Drive	W5150-K626	(48624787)	31	20V Li-Ion Battery Pack		
16	Anvil	--	--		1.5 Ah	BL2005	(48386783)
12	O-Ring	--	--		2.5 Ah	BL2012	(47515903001)
13	Socket Retainer	--	--		3.0 Ah	BL2010	(48386791)
17	Impact Mechanism Kit	W5130-K724	(48624795)		5.0 Ah	BL2022	(47515902001)
*	Planetary Gear Kit	W5130-K37	(48624803)	*	Protective Battery Boot		
18	Planet Gear (3 Required)	--	--		For BL2005, BL2012	BL2005-BOOT	(47510965001)
19	Pin (3 Required)	--	--		For BL2010, BL2022	BL2010-BOOT	(47510964001)
				*	Battery Charger	BC1121	(47507879001)
				*	Carrying Case	W5000-CASE	(48622104)
				*	Carrying Case Latch	W7000-LATCH	(47507275001)

\* Not illustrated

## Parts and Maintenance

When tool life has expired, it is recommended that the tool be disassembled, degreased and parts separated by material for proper recycling.

Tool repair and maintenance should only be carried out by an authorized Service Center.

Refer all communications to the nearest **Ingersoll Rand** office or distributor.

## Related Documentation

Manuals can be downloaded from [ingersollrandproducts.com](http://ingersollrandproducts.com)

For additional information, refer to:

Cordless Impact Wrench Product Safety Information Manual 04581146.

Cordless Impact Wrench Product Information Manual 48383970.

