

Air Drill, Screwdriver and Angle Wrench

5L and 5RL



Product Parts Information



Save These Instructions

When tool life has expired, it is recommended to:

- disassemble the tool
- degrease the tool
- separate tool parts by material for correct recycling

Tool repair and maintenance should be conducted by an authorized service center.

Refer all communications to the nearest **Ingersoll Rand** office or distributor.

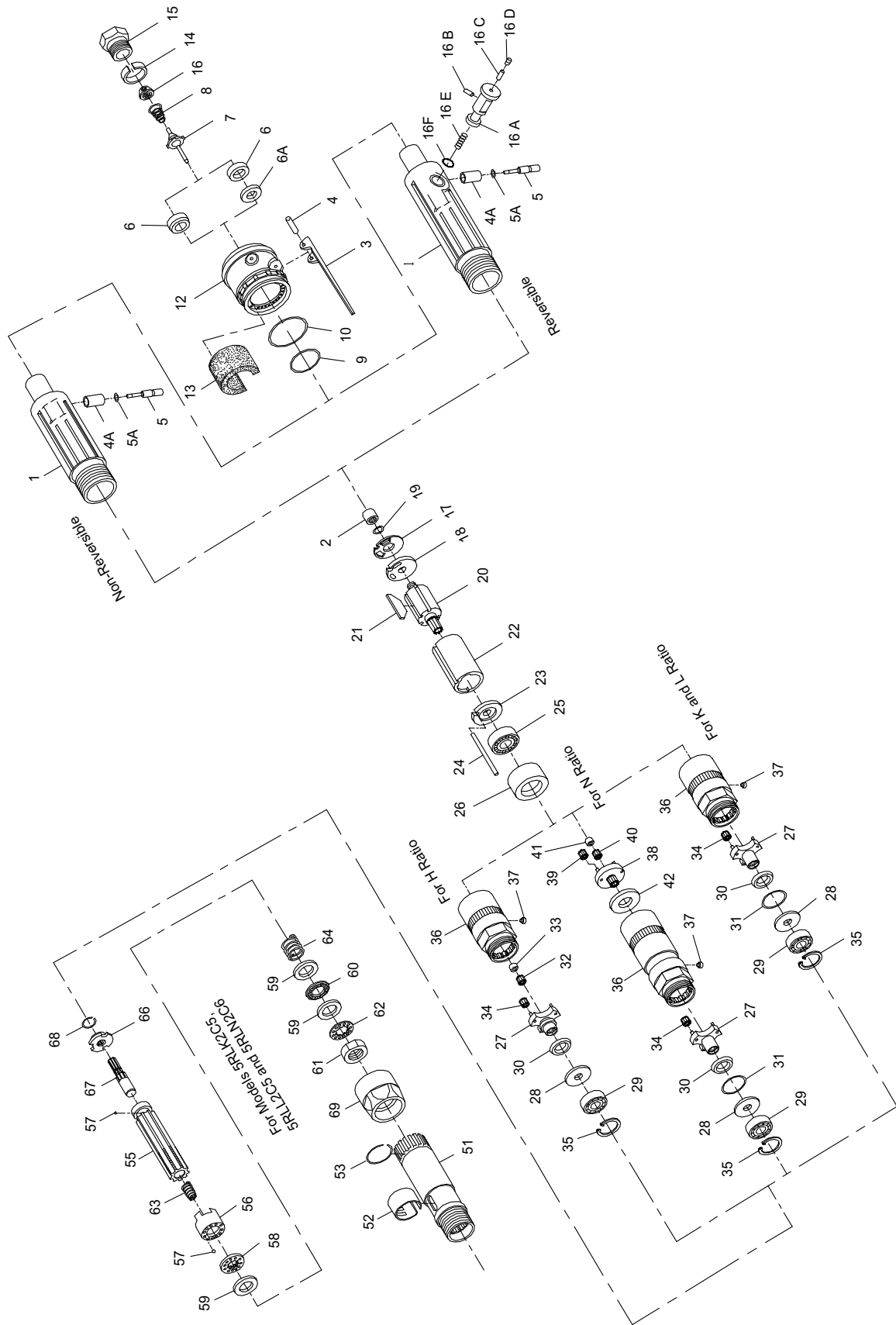
Manuals are available at ingersollrandproducts.com

Table 1. Product Information Manuals

Publication	CCN
Product Safety Information Manual	04580353 and 04585006
Product Information Manual	16572182, 80167471 and 80167489
Product Maintenance Information Manual	16572620

5L and 5RL Air Drill, Screwdriver and Angle Wrench

Figure 1. Exploded View



5L and 5RL Air Drill, Screwdriver and Angle Wrench

Table 2. 5L and 5RL Air Drill, Screwdriver and Angle Wrench - Parts List

Item No.	Part Description	Part Number
	Motor Housing Assembly	
	for 90° Angle Drill models ending in -EU	5LK2C-EU-A40
	for all other 90° Angle Drill models	5LK2C-A40
	for 45° Angle Drill models ending in -EU	5L1B-EU-A40
	for all other 45° Angle Drill models	5L1B-A40
	for non-reversible Angle Wrench or Angle Screwdriver models ending in -EU	5LK2D-EU-A40
	for all other non-reversible Angle Wrench or Angle Screwdriver models	5LK2D-A40
	for reversible Angle Wrench or Angle Screwdriver models ending in -EU	5RLK2C-EU-A40
	for all other reversible Angle Wrench or Angle Screwdriver models	5RLK2C-A40
1	Motor Housing	
	for 5L1UB-EU-A40	5L1B-EU-B40
	for 5L1UB-A40	5L1B-B40
	for 5LK2C-EU-A40 or 5LK2D-EU-A40	5LK2C-EU-B40
	for 5LK2C-A40 or 5LK2D-A40	5LK2C-B40
	for 5RLK2C-EU-A40	5RLK2C-EU-B40
	for 5RLK2C-A40	5RLK2C-B40
(a) 2	Rear Rotor Bearing	
	for non-reversible models	5LK2C-24
	for reversible models	5R-24
(b)	Warning Label	
	for models ending in -EU	EU-99
	for all other models	WARNING-7-99
3	Throttle Lever	7L-273
4	Throttle Lever Pin	7L-120
4A	Throttle Plunger Bushing	
	for 45° Angle Drills and all other non-reversible models	7L-91
	for reversible models	5RLK2C-91
5	Throttle Plunger Seal	
	for non-reversible models	6LL-259
	for reversible models	8SL-259
(a) 6	Throttle Valve Seat	
	for Angle Drills	7AH-303
	for Angle Wrenches/Angle Screwdrivers	7RAK-303
6A	Throttle Valve Seat Support	
	for Angle Wrenches/Angle Screwdrivers	7RAK-304
(a) 7	Throttle Valve	
	for Angle Drills	7AH-302
	for Angle Wrenches/Angle Screwdrivers	7RAK-302
(a) 8	Throttle Valve Spring	7L-51
(a) 9	Silencer Seal Ring	WWV100A1-43
(a) (c) 10	Spindle Bearing Seal	6AH-103
(a) 12	Rear Muffler Assembly	6WS-A23

5L and 5RL Air Drill, Screwdriver and Angle Wrench

Table 2. 5L and 5RL Air Drill, Screwdriver and Angle Wrench - Parts List (continued)

Item No.	Part Description	Part Number
13	Muffler Element	3RA-310
14	Inlet Bushing Spacer	7AH-65
15	Inlet Bushing	7L-565
(a) 16	Air Strainer Screen	ROA2-61
16A	Reverse Valve (for reversible models only)	55RP-329
16B	Reverse Valve Lock Pin (for reversible models only)	SPA102R-668
16C	Lock Pin Retainer (for reversible models only)	7RL-56
16D	Retainer Setscrew (for reversible models only)	7RL-669
16E	Reverse Valve Spring (for reversible models only)	55RP-515
16F	Reverse Valve Bushing Seal (for reversible models only)	6WRS-290
(a) (c) 17	Rear End Plate Gasket	5RLK-739
18	Rear End Plate	5RLK-12
(a) 19	End Plate Retainer	5RLK-118
20	Rotor	
	for K ratio (8 teeth)	5RLK-53
	for H, L or N ratio (6 teeth)	5RLL-53
(a) 21	Vane Packet	R1401-42-5
22	Cylinder	
	for non-reversible models	5LK-3
	for reversible models	5RLK-3
23	Front End Plate	106-11
24	Cylinder Dowel	106-98
(a) (c) 25	Front Rotor Bearing	WWA100-97
26	Front Rotor Bearing Support	106-13
	Spindle Assembly	
	for H ratio	5LH2A-A8
	for K or L ratio	5LK2C-A8
	for N ratio	5LN2C-A8
27	Spindle	
	for H ratio (marked H)	5LH2A-8
	for K or L ratio (marked K)	5LK2C-8
	for N ratio (marked N)	5LN2C-8
28	Grease Shield	5R-701
29	Spindle Bearing	R1L-24
30	Seal Support	5RAK-5
(a) (c) 31	Seal (for N ratio only)	182A53-610
32	Rotor Pinion (for H ratio) (15 teeth)	5RAN-17
33	Rotor Pinion Spacer (for H ratio)	5RAN-18

5L and 5RL Air Drill, Screwdriver and Angle Wrench

Table 2. 5L and 5RL Air Drill, Screwdriver and Angle Wrench - Parts List (continued)

Item No.	Part Description	Part Number
(c) 34	Spindle Planet Gear (QTY. 3)	
	for H ratio (13 teeth)	5RAN-9
	for K ratio (15 teeth)	5RAK-10A
	for L ratio (17 teeth)	5RAL-10B
	for N ratio (14 teeth)	5RAN-10A
35	Spindle Bearing Retainer	7L-28
36	Gear Case Assembly	
	for H or L ratio	5LL2C-A37
	for K ratio	5LK2C-A37
	for N ratio	5LN2C-A37
37	Grease Fitting	D0F9-879
38	Gear Head Assembly (for N ratio)	5RAN-A216
(c) 39	Gear Head Planet Gear (13 teeth) for N ratio) (QTY. 3)	5RAN-9
(c) 40	Rotor Pinion (for N ratio) (15 teeth)	5RAN-17
(c) 41	Rotor Pinion Spacer (for N ratio)	5RAN-18
42	Gear Head Spacer (for N ratio)	5R-80
	Cushion Clutch Attachment	
	with Light Clutch Spring	5LK2C-AL580
	with Heavy Clutch Spring	5LN2C-AH580
51	Clutch Housing Assembly	5LK2C-B580
52	Adjusting Hole Cover	5C1-415
53	Coupling Nut Retainer	5C1-29
	Clutch Shaft Assembly	
	for Light Clutch Spring	5LK2C-AL586
	for Heavy Clutch Spring	5LN2C-AH586
55	Clutch Shaft	5LK2C-586
(c) 56	Front Clutch Jaw	5C1-589A
(c) 57	Clutch Ball (QTY. 24)	RX1-629
(c) 58	Clutch Ball Spacer	5C1-401A
(c) 59	Clutch Spring Seat (QTY. 3)	5C1-627
(c) 60	Spring Seat Bearing	5C1-105
61	Clutch Adjusting Nut	5C1-582A
62	Adjusting Nut Lock	5C1-588
63	Clutch Engaging Spring	5LK2C-626
64	Clutch Spring	
	Light (Black)	5C1-L583
	Heavy (Green)	5C1-H583
	Clutch Driver Assembly	5LK2C-A581
(c) 66	Clutch Driver	5LK2C-581
67	Clutch Shaft Support	5LK2C-584
(c) 68	Clutch Driver Retainer	7AH-118

5L and 5RL Air Drill, Screwdriver and Angle Wrench

Table 2. 5L and 5RL Air Drill, Screwdriver and Angle Wrench - Parts List (continued)

Item No.	Part Description	Part Number
69	Coupling Nut	7L-27
(b)	Clutch Sprag Key	5C1-416
(b)	Suspension Bail	7L-365
(b)	Grease Gun	R000A2-228
(b)	Housing Cap Wrench	141A12-26
(b)	Thread Retaining Compound	141A12-226
(b)	Locking Type Throttle Lever Assembly	
	for Model 5LH1A1 and 5LH1A4	5LH1A1-A400
	for Model 5LH1B1	5LH1B1-A400
	for Model 5LK1A1	5LK1A1-A400
	for Model 5LK1B1 and 5LK1B4	5LK1B1-A400
	for Model 5LL1A1	5LL1A1-A400
(b)	Piped-Away Exhaust Kit	7L-K284
(b)	Vibra-Tite®+ (30.0 cc)	5R-VT30
(b)	Tune-up Kit (for Angle Drills) (includes illustrated parts 2, 6, 7, 8, 9, 10, 12, 16, 17, 19, 21, 25 and 31)	5L-NS-TK1
(b)	Tune-up Kit (for Angle Wrenches/Angle Screwdrivers) (includes illustrated parts 2, 6, 7, 8, 9, 10, 12, 16, 17, 19, 21, 25 and 31)	5RL-NS-TK1
(b)	Horizontal Hanger	6WS-366
(b)	Retainer	500B-815AX

(a) Indicates Tune-up Kit part.

(b) Indicates Not Illustrated.

(c) Indicates common-wear parts. Maintain stock to reduce downtime.

5L and 5RL Air Drill, Screwdriver and Angle Wrench

Table 3. 5L and 5RL Air Drill, Screwdriver and Angle Wrench - Parts List

Item	Part Description	7L1A1	7L1A3	7L1A4	7L1B1	7L1B4	7L2A4
101	Angle Drill Attachment	7L1A1	7L1A1	7L1A	7L1B	7L1B4	7L2A4
	Angle Housing Assembly	7L1A-B550	7L1A-B550	7L1A-B550	7L1B-A550	7L1B-B550	7L2A-B550
102	Grease Fitting	D0F9-879	D0F9-879	D0F9-879	D0F9-879	D0F9-879	D0F9-879
(a) 104	Spindle Upper Bearing	—	—	—	—	—	120A4-603
105	Spindle Upper Bearing	7L1A-603	7L1A-603	7L1A-603	7L1B-A97	7L1B-A97	—
(a) 106	Upper Bearing Shim Packet (two thicknesses of shims)	7L1A-P448	7L1A-P448	7L1A-P448	—	—	—
(a) 107	Spindle Gear Set (includes bevel pinion and spindle gear)						
	1/4"-28 female thread	7L1A1-A591	—	—	7L1B1-A591	—	—
	9/32"-40 female thread	—	—	7L1A4-A591	—	7L1B4-A591	—
	5/16"-24 female thread	—	7L1A3-A591	—	—	—	—
(a) 108	Matched Bevel Gear Set (includes bevel gear and bevel pinion)	—	—	—	—	—	141A12-A552
108A	Spindle (3/8"-24 male thread)	—	—	—	—	—	7L2A4-791
(a) 109	Bevel Pinion Bearing	7AH-24	7AH-24	7AH-24	7L1B-593	7L1B-593	H54U-511B
110	Bearing Seat Retainer	W22-6	W22-6	W22-6	W22-6	W22-6	1415A12-6
111	Rear Thrust Bearing Seat	7L2A-682	7L2A-682	7L2A-682	7L2A-682	7L2A-682	7L2A-682
112	Bevel Pinion Thrust Bearing	3RL2-105	3RL2-105	3RL2-105	3RL2-105	3RL2-105	161A32-105
113	Front Thrust Bearing Seat	7L1A-683	7L1A-683	7L1A-683	7L1A-683	7L1A-683	141A12-683
114	Pinion Bearing Spacer Retainer	—	—	—	—	—	RXA21-343
116	Bevel Pinion Bearing Spacer	—	—	—	—	—	7L2A-165
(a) 119	Lower Spindle Bearing	7L1A-593	7L1A-593	7L1A-593	7L1B-593	7L1B-593	120A4-593
119A	Lower Spindle Bearing Retainer	—	—	—	7L1B-28	7L1B-28	—
120	Bevel Gear Retainer	—	—	—	—	—	120A4-578
121	Spindle Bearing Cap	7L1A-531	7L1A-531	7L1A-531	—	—	7L2A4-531
123	Coupling Nut Retainer	5C1-29	5C1-29	5C1-29	5C1-29	5C1-29	5C1-29
124	Coupling Nut	7L-27	7L-27	7L-27	7L-27	7L-27	7L-27
(b)	Drill Chuck						
(b)	0 to 1/4" capacity	—	—	—	—	—	R0H-99
	0 to 3/8" capacity	—	—	—	—	—	R1M-99
	Drill Chuck Key						
	for R0H-99	—	—	—	—	—	R1H-J253
	for R1M-99	—	—	—	—	—	R1M-J253
(b)	Bearing Inserting Tool	7L1A-950	7L1A-950	7L1A-950	7L1B1-955	7L1B1-955	7L2A-950
(b)	Bevel Pinion Sprag Key	5C1-416	5C1-416	5C1-416	5C1-416	5C1-416	—

(a) Indicates common-wear parts. Maintain stock to reduce downtime.

(b) Indicates Not Illustrated.

5L and 5RL Air Drill, Screwdriver and Angle Wrench

Table 4. 5L and 5RL Air Drill, Screwdriver and Angle Wrench - Parts List

Item	Part Description	5L2C3	5L2C5 or 5L2C6	5L2D5	6L2C6
	Angle Wrench/Angle Screwdriver Attachment				
	1/4" hex recess (for standard bits)	5L2C3	—	—	—
	1/4" square drive	—	5L2C5	5L2D5	—
	3/8" square driver	—	5L2C6	—	6L2D6
201	Angle Housing Assembly	5L2C-A550	5L2C-A550	7L2A-B550	6L2D-B550
202	Grease Fitting	D0F9-879	D0F-879	D0F-879	D0F-879
(a) 203	Upper Spindle Bearing	120A4-603	120A4-603	120A4-603	120A4-603
(a) 204	Matched Bevel Gear Set	141A12-A552	141A12-A552	141A12-A552	6L2D-A552
(a) 205	Bevel Pinion Bearing	H54U-511B	H54U-511B	H54U-511B	H54U-511B
206	Rear Thrust Bearing Seat	—	—	7L2A-682	7L2A-682
207	Bearing Seat Retainer	—	—	1415A12-6	1415A12-6
208	Front Thrust Bearing Seat	—	—	141A12-683	141A12-683
209	Pinion Bearing Spacer	AGS141-165	AGS141-165	7L2A-165	7L2A-165
(a) 210	Bearing Spacer Retainer	RXA21-343	RXA21-343	RXA21-343	RXA21-343
211	Bevel Pinion Thrust Bearing	120A4-97	120A4-97	161A32-105	161A32-105
(a) 212	Bearing Retainer	120A4-588	120A4-588	—	—
(a) 213	Lower Spindle Bearing	120A4-593	120A4-593	120A4-593	6L2D-59
(a) 214	Bevel Gear Retainer	120A4-578	120A4-578	120A4-578	120A4-578
215	Coupling Nut Retainer	141A12-29	141A12-29	5C1-29	5C1-29
216	Coupling Nut	141A12-27	141A12-27	7L-27	7L-27
217	Socket Adapter Spindle				
	1/4" square drive	—	141A9-A607-1/4	141A9-A607-1/4	—
	3/8" square drive	—	141A12-A607	—	6L2D-A607
(b)	Socket Retainer (for 1/4" pin type square drive)	—	500B-816A	500-816A	—
(b)	Socket Retaining Pin (for 3/8" square drive)	—	5020-716	—	5020-716
(b)	Socket Retaining Spring (for 3/8" square drive)	—	401-718	—	401-718
218	1/4" Hex Bit Holder Spindle (for standard bits)	5L2C3-B586	—	—	—
219	Bit Retaining Ball (for No.5L2C3-B586 Spindle)	AV1-255	—	—	—
220	Bit Retaining Spring (for No.5L2C3-B586 Spindle)	102A60-241	—	—	—
221	Angle Housing Cap	120A4-531	120A4-531	120A4-531	6L2D-531
221A	Spindle Seal	—	—	—	6L2D-720
(b)	Socket Retainer (for 1/4" ball-type square drive)	—	500B-815AX	500B-815AX	—

(a) Indicates common-wear parts. Maintain stock to reduce downtime.

(b) Indicates Not Illustrated.

5L and 5RL Air Drill, Screwdriver and Angle Wrench

Table 5. 5L and 5RL Air Drill, Screwdriver and Angle Wrench - Parts List

Item	Part Description	Part Number
217	Spindle	
	1/4" square drive	141A9-A607-1/4
	3/8" square drive (for 5L2C5 or 5L2C6)	141A12-A607
	3/8" square drive (for 6L2D6)	6L2D-A607
218	1/4" hex recess (for standard bits)	5L2C3-B586
(a)	1/4" hex recess (for insert bits)	5L2C4-B386
(a)	Bit Retainer (for No.5L2C4-B386 Spindle)	5L2C4-425
219	Bit Retaining Ball (for No. 5L2C3-B586)	AV1-255
220	Bit Retaining Spring (for No. 5L2C3-B586)	102A60-241
(a)	Socket Retainer (for No.141A9-A607-1/4 Spindle)	500B-816A
(a)	Socket Retaining Spring (for 141A12-A607 Spindle or 6L2D-A607 Spindle)	401-718
(a)	Socket Retainer Pin (for 141A12-A607 Spindle or 6L2D-A607 Spindle)	5020-716

(a) Indicates Not Illustrated.

