

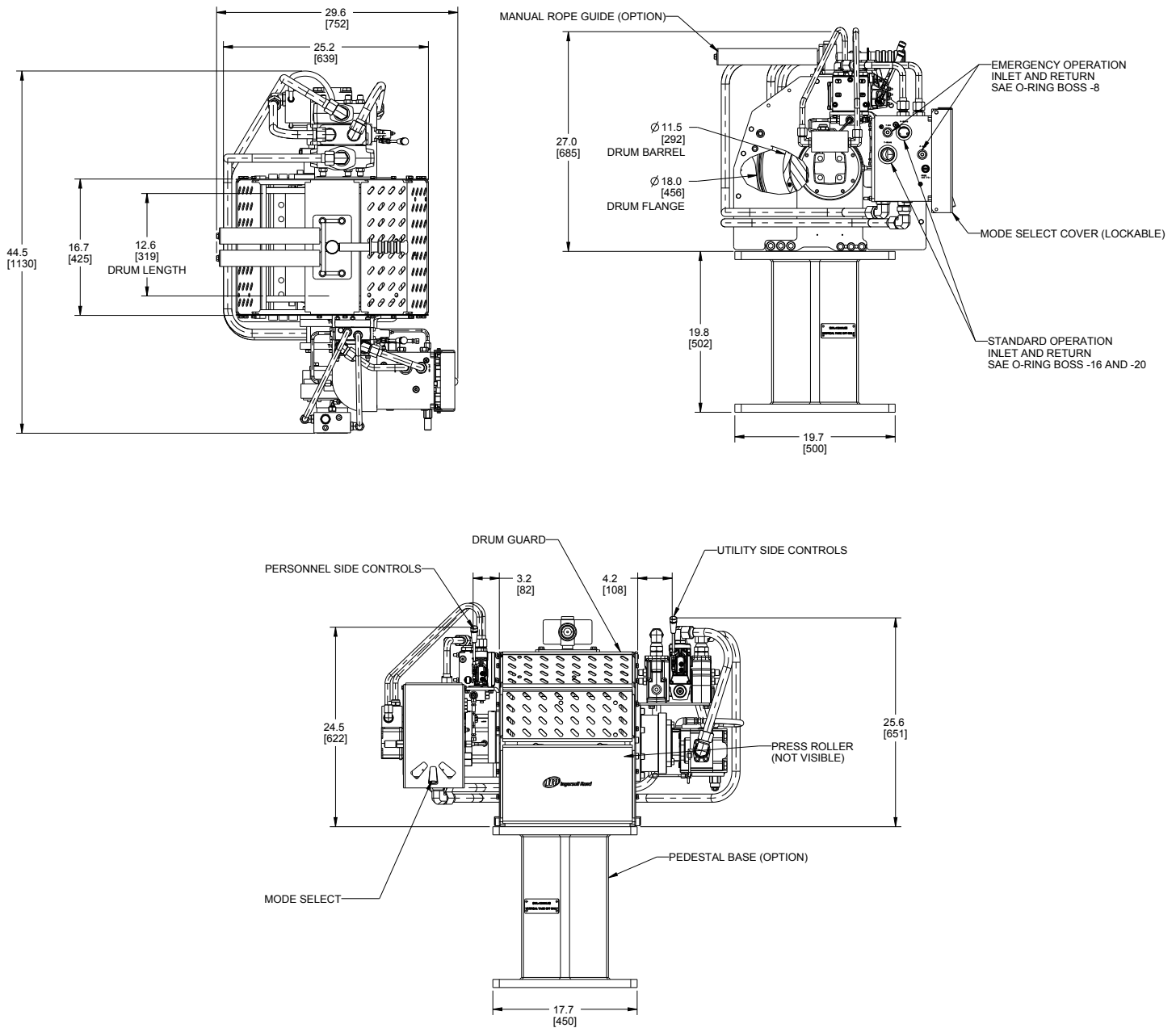


Hydraulic Force Series™ Dual Purpose Winch Specifications

Specification/Feature	Utility Mode	Man-Riding Mode
Motor Type	Hydraulic gear	Hydraulic Geroler
Horsepower	57 HP	1.7 HP
Lifting Capacity (lbs)	12,000 lbs (rated on first layer)	350 lbs (rated on top layer)
Top Layer Line Speed (fpm)	157 fpm @ 45 GPM	100 fpm (hydraulically limited @ 4 GPM)
Rope Storage Capacity (ft)	373 ft (5/8" wire rope)	
Working Rope Capacity (ft)	285 ft (5/8" wire rope)	
Operating Pressure (psi)	2800 psi (max)	2800 psi (set at factory)
Flow Rate (gpm)	65 gpm (max)	4 GPM
Unit Weight (lbs)	650 lbs*	
Drum Length (in)	12.89"	12.89"
Brakes	Disc + counterbalance valve	Disc + counterbalance valve
Controls/Throttle Type	Manual proportional	Manual proportional
Drum Guard	Standard	
Emergency Stop	Ball Valve to Shut Off Hydraulic Fluid (standard)	
Overload Protection	N/A	Pressure reducing valve (set at factory)
Spooling Assist (Press Roller)	Standard	
D/d Ratio	19.2 (5/8" wire rope)	
Pedestal Base	Option	
Manual Rope Guide	Option	
Other Features of Note	Proprietary mode selector locks out mode that's not currently in use. Emergency lowering system standard for both modes (ports for connection to auxiliary HPU).	

*Estimated weight of the winch

Hydraulic Force Series™ Dual Purpose Winch Dimensions



ingersollrandproducts.com

Ingersoll Rand (NYSE:IR) advances the quality of life by creating comfortable, sustainable and efficient environments. Our people and our family of brands—including Club Car®, Ingersoll Rand®, Thermo King® and Trane®—work together to enhance the quality and comfort of air in homes and buildings; transport and protect food and perishables; and increase industrial productivity and efficiency. We are a \$14 billion global business committed to a world of sustainable progress and enduring results. For more information, visit ingersollrandproducts.com/hydraulicforce.