



**16572760**  
Edition 2  
May 2014

## **Air Drill**

**1 Series**

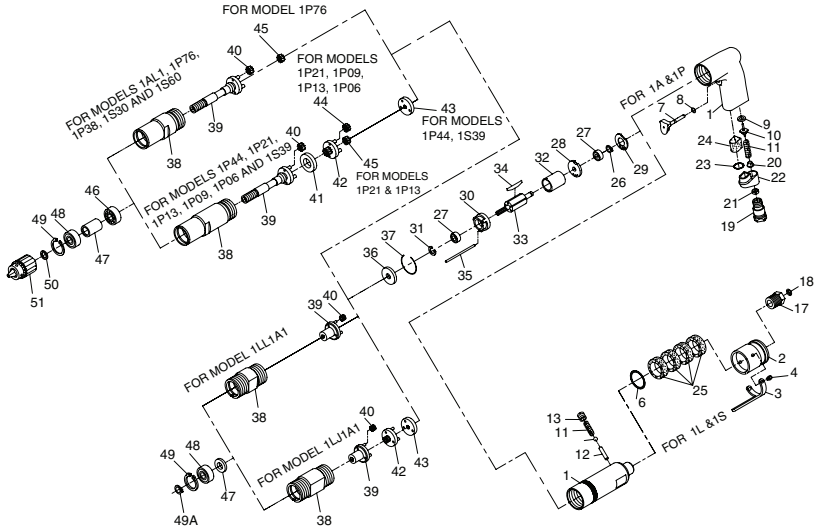
---

# **Parts Information**



Save These Instructions

## 1 Series Air Drill Motor and Gearing Exploded Diagram



(Dwg.TP2084)

## 1 Series Air Drill Motor and Gearing Parts List

Item	Part Description	Part Number	Item	Part Description	Part Number
1	Motor Housing Assembly	3A-EU-A40	17	Inlet Bushing Assembly (for Models 1S and 1L)	3RL-565
	For all 1A and 1P Models	3L-EU-A40	• 18	Inlet Screen (for Models 1L and 1S)	3RL-61
	For all 1S and 1L Models	3RL-EU-A23	19	Inlet Bushing (for Models 1A and 1P)	7AH-565
	Exhaust Deflector Assembly (for 1L and 1S Models)	3RL-EU-23	† • 20	Inlet Screen (for Models 1A and 1P)	ROA2-61
2	Exhaust Deflector (for Model 1L and 1S)	3RL-273	21	Inlet Bushing Spacer (for Models 1A and 1P)	3RA-65
3	Throttle Lever (for Model 1L and 1S)	3RL-120	22	Muffler Assembly (for Models 1A and 1P)	3RA-A123
4	Throttle Lever Pin (2)	7L-365	† • 23	Muffler O-Ring (for Models 1A and 1P)	85H-167
*5	Vertical Hanger	3RL-210	† • 24	Muffler Element (for Models 1A and 1P)	3RA-310
.6	Exhaust Deflector Seal (for Models 1L and 1S)	3RA-A93	• 25	Muffler Element (4) (for Models 1L and 1S)	3RL-311
7	Trigger Assembly (for Models 1A and 1P)	85L-259	† • 26	Rear Rotor Bearing Retainer	85L-305
† • 8	Trigger Pin Seal (for Models 1A and 1P)	7AH-303	† 27	Rotor Bearing (2)	DG10-22
† • 9	Throttle Valve Seat (for Models 1A and 1P)	7AH-303	28	Rear End Plate	
† • 10	Throttle Valve (for Models 1A and 1P)	7AH-302	† • 29	Rear End Plate Gasket	3RL-739
† • 11	Throttle Valve Spring		30	Front End Plate	3RL-11
	For Models 1A and 1P	3RA-51	† • 31	Front Rotor Bearing Retainer	3RL-13
	For Models 1L and 1S	3RL-51	32	Cylinder (for Models 1A and 1L)	3RL-3
12	Throttle Valve Plunger For Models 1L and 1S	3RL-302		Cylinder (for Models 1P and 1S)	3RL-3HP
13	Throttle Valve Cap (for Models 1L and 1S)	3RL-266	33	Rotor (for Models 1A and 1L)	3RL-53
14	Throttle Valve Ball (for Models 1L and 1S)	4U-722		Rotor (for Models 1P and 1S)	3RL-53HP
* 15	Name Plate For all Models	04725032	† • 34	Vane Packet (set of 5 Vanes) (for Models 1A & 1L)	3RL-42-5
* 16	Warning Label For all Models	WARNING-28-99		Vane Packet (set of 6 Vanes) (for Models 1P & 1S)	3RL-42-6

## 1 Series Air Drill Parts List

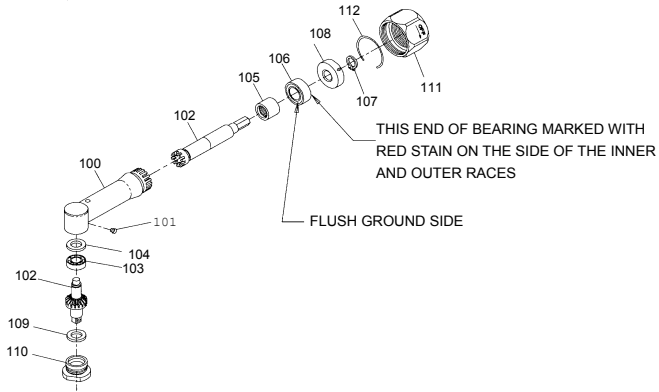
Item	Part Description	Part Number	Item	Part Description	Part Number
35	Cylinder Dowel	3RL-98		For Models 1P44ST4, 1LJ1A1, 1P13ST4 and 1S39MF4	3RLN-216
36	Motor Clamp Washer	3RL-207		For Model 1P06ST4	M002-216-044
37	Clamp Washer Retaining Ring	3RL-208		For Model 1P09ST4	M002-216-028
38	Gear Case		43	Drive Plate (for Models 1P44ST4, 1LJ1A1 and 1P39MF4)	M002-171
	For Models 1AL1, 1P38ST4, 1S30MF4, 1P76ST4 and 1S60MF4	3AL-37	44	Gear Head Planet Gear (3)	
	For Models 1P44ST4, 1P21ST4, 1P13ST4, 1P09ST4, 1P06ST4 and 1S39MF4	3AM-37		For Models 1P21ST4 and 1P13ST4	3RLM-10
	For Models 1LL1A1	3RLL-37		For Models 1P09ST4 and 1P06ST4	3RLL-10
	For Models 1LJ1A1		45	Rotor Pinion (for Models 1P21ST4, 1P13ST4 and 1P76ST4)	3RLM-17
39	Spindle		46	Rear Spindle Bearing (for all Models except 1LL1A1 and 1LJ1A1)	R00H-97
	For Models 1P76ST4, 1P44ST4 and 1S60MF4	3AH-8	47	Spindle Bearing Spacer (for all Models except 1LL1A1 and 1LJ1A1)	3A-111A
	For Models 1AL1, 1P38ST4 and 1S30MF4	3AL-8	48	Front Spindle Bearing	R00A-510
	For Models 1P09ST4 and 1P21ST4	3AM-8	49	Spindle Bearing Retainer	
	For Models 1P44ST4, 1P13ST4, 1P06ST4 and 1S39MF4	3AN-8		For all Models except 1LLA1 and 1LJ1A1	3RANT2-28
	For Model 1LL1A1	3RLL-108		For Models 1LJ1A1 and 1LL1A1	3RL-28
	For Model 1LJ1A1	3RLN-108	49A	Spindle Retaining Ring (for Models 1LJ1A1 and 1LL1A1)	3RL-6
40	Spindle Planet Gear (3)		50	Drill Chuck Spacer	5A-90
	For Models 1AL1, 1LL1A1, 1P38ST4 and 1S30MF4	3RLL-10	51	Drill Chuck	ROH-99
	For Models 1P76ST4, 1P09ST4, 1P21ST4 and 1P60MF4	3RLM-10	51A	Chuck Key	R1H-J253
	For Models 1P44ST4, 1LJ1A1, 1P13ST4, 1P06ST4 and 1S39MF4	3RLN-10	52	Horizontal Hanger	3RA-365
41	Gear Head Spacer (for Models 1P44ST4, 1P21ST4, 1P13ST4, 1P09ST4, 1P06ST4 and 1S39MF4)	3RL-80	53	Tune-up Kit (includes illustrated parts 8, 9, 10, 11, 20, 23, 24, 26, 27[2], 29, 31 and 34)	3A-TK2
42	Gear Head			Tune-up Kit (includes illustrated parts 8, 9, 10, 11, 20, 23, 26, 27, 29, 31 and 34)	3A-TK2HP
	For Model 1P21ST4	3RLM-216			

\* Not illustrated

† Indicates Tune-up Kit part.

• To keep downtime to a minimum, it is desirable to have on hand certain repair parts. We recommend that you stock one (pair or set) of each part indicated by a bullet (•) for every four tools in service.

## 1 Series Air Drill Angle Attachment Exploded Diagram



(Dwg.TPC525)

## 1 Series Air Drill Angle Attachment Parts List

Item	Part Description	3RL1A1	3RL1A4
	Angle Attachment	3RL1A1	3RL1A4
100	Angle Housing	3RL1A-550	3RL1A-550
101	Grease Fitting	D0F9-879	D0F9-879
102	Matched Bevel Gear Set (Bevel Pinion and Spindle not sold separately)	3RL1A-A591	3RL1A4-A591
103	Spindle Upper Bearing	7L1A-603	7L1A-603
104	Upper Bearing Shim Packet	7L1A-P448	7L1A-P448
105	Bevel Pinion Bearing	7AH-24	7AH-24
106	Bevel Pinion Thrust Bearing	3RL1A-514	3RL1A-514
107	Thrust Bearing Retainer	3RL2-705	3RL2-705
108	Rear Thrust Bearing Seat Assembly (Includes Rear Bearing Seat and Lock Pin)	3RL1A-682	3RL1A-682
109	Lower Spindle Bearing	7L1A-593	7L1A-593
110	Spindle Bearing Cap	7L1A-A531	7L1A-531
111	Coupling Nut	3RL2-27	3RL2-27
112	Coupling Nut Retainer	3RL2-29	3RL2-29

## Parts and Maintenance

When the life of the tool has expired, it is recommended that the tool be disassembled, degreased and parts be separated by material so that they can be recycled.

Tool repair and maintenance should only be carried out by an authorized Service Center.

Refer all communications to the nearest **Ingersoll Rand** Office or Distributor.

## Related Documentation

For additional information refer to:

Product Safety Information Manual 04580353.

Product Information Manual 16572059.

Product Maintenance Information Manual 16572661.

Manuals can be downloaded from [ingersollrandproducts.com](http://ingersollrandproducts.com)







[ingersollrandproducts.com](http://ingersollrandproducts.com)

© 2014 *Ingersoll Rand*

