



**04584595**  
Edition 4  
October 2013

# Air Impact Wrench

**2902 Series**

---

## Parts Information



Save These Instructions

**IR** *Ingersoll Rand*



## 2902P and 2902SB Air Impact Wrench Housing Assembly - Parts List

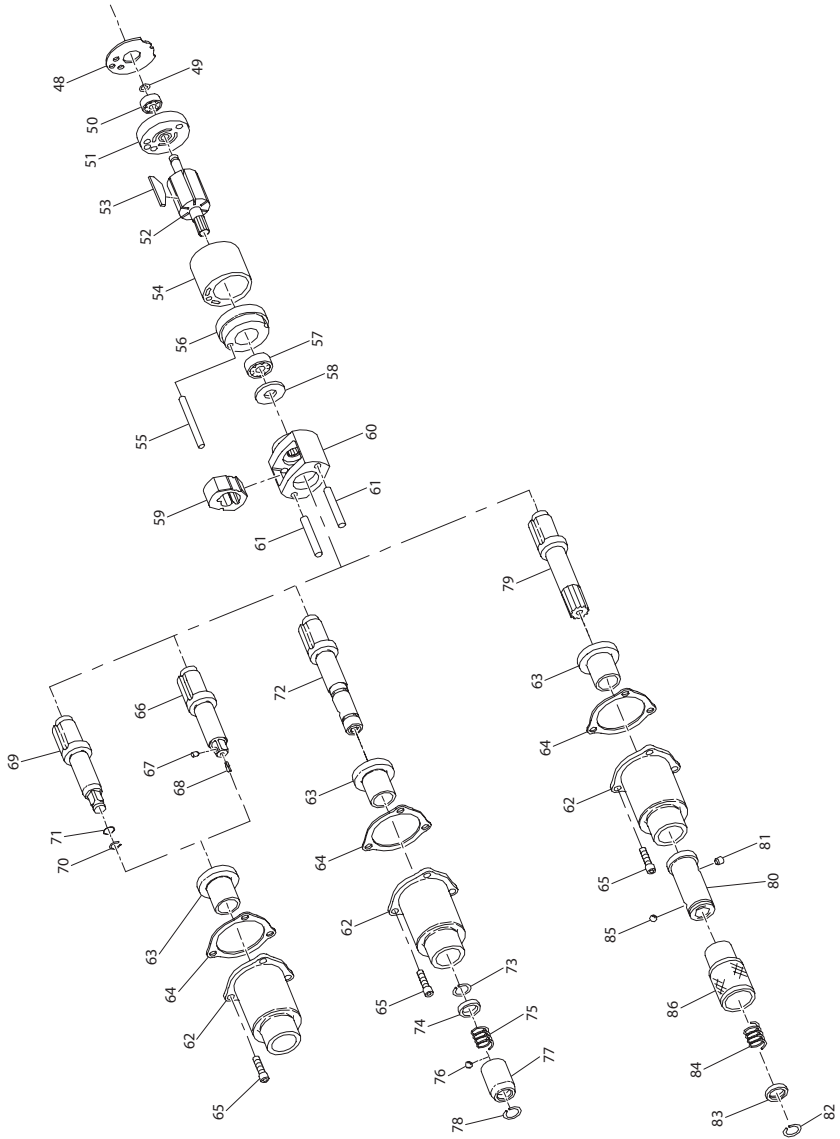
Item	Part Description	Part Number		Item	Part Description	Part Number	
		2902P	2902SB			2902P	2902SB
1	Motor Housing Assembly	2902P-A40	2902SB-A40	30	Reverse Valve Stop	---	401-665
6	Inlet Bushing Assembly	402-565	---	† 31	Bushing Seal	---	CE110-210
† • 7	Bushing O-Ring	202-103	---	32	Grease Fitting	---	130SR-188
8	Exhaust Deflector	2902P-23	---	† 33	Detent Ball	R000B-263	---
† • 9	Deflector Gasket	202-223	---	† 34	Detent Ball Spring	202-664	---
† • 10	Long Exhaust Silencer	728-310	---	35	Reverse Valve Knob	1702P-666	---
11	Reverse Valve	1702P-329	---	36	Knob Screw	WWA100-77	---
† • 12	Reverse Valve O-Ring (2)	CE110-210	---	37	Grease Fitting	130SR-188	---
13	Throttle Valve	---	R000B2-302		Throttle Valve Assembly	202-A302	---
† • 14	Throttle Valve Face	---	401-159	38	Throttle Valve	202-302	---
† 15	Throttle Valve Spring	---	5081T-151	† • 39	Throttle Valve Face	R000BR1C-283	---
16	Throttle Lever	---	201-273	40	Trigger	5RA-93	---
17	Throttle Lever Pin	---	502B-120	41	Throttle Valve Retaining Pin	AF120-322	---
† 18	Silencer (4)	---	1702B-311	42	Throttle Valve Bushing	202-503	---
19	Inlet Assembly Spacer	---	R00-35A	† • 43	Large Bushing O-Ring	410-283	---
	Air Inlet Assembly	---	2902B-A166	† • 44	Small Bushing O-Ring (2)	202-290	---
20	Swivel Inlet Body	---	2902B-165	45	Bushing Retaining Pin	R100B-120	---
21	Swivel Inlet Assembly	---	1702B-B166	46	Nameplate	2902P-301	2902SB-301
† 22	Swivel Inlet Seal (2)	---	R18LF-21	47	Nameplate Screws (3)	---	BN403-302
23	Power Regulator Assembly	---	1702B-A249	† • 48	End Plate Gasket	202-739	401-739
† • 24	Power Regulator Seal	---	R00B1-159	*	Tune-up Kit (Includes illustrated items: 7, 9, 10, 12, 33, 34, 39, 43, 44, 48, 49, 50, 53, 57, 64, 67 and 68)	1702P-TK2	---
25	Regulator Retainer	---	201-250				
† • 26	Detent Spring	---	201-251				
† • 27	Detent Ball	---	R000B-263	*	Tune-up Kit (Includes illustrated items: 14, 15, 18 [4], 22 [2], 24, 26, 27, 28, 31 37, 48, 49, 50, 53, 64, 67, and 68)	---	1702SB-TK2
28	Reverse Valve Assembly	---	1702B-A329				
† • 29	Reverse Valve Seal	---	ROBR1C-283				

\* Not Illustrated.

† Indicates Tune-up Kit part.

- To keep downtime to a minimum, it is desirable to have on hand certain repair parts. We recommend that you stock one (pair or set) of each part indicated by a bullet (•) for every four tools in service.

# 2902P and 2902SB Air Impactool Power Unit - Exploded View



(Dwg. TPA1343)

## 2902P and 2902SB Air Impactool Power Unit - Parts List

Item	Part Description	Part Number	Item	Part Description	Part Number
† 49	Rear Rotor Bearing Retainer	MF-18	• 70	Socket Retaining Ring	1702-425
† 50	Rear Rotor Bearing	401-22	• 71	Retainer Support Ring	1702-426
51	Rear End Plate	201-12		Quick-Change Anvil Assembly (1/4" hex)	1702-A926-4
52	Rotor	401-53	72	Quick-Change Anvil	1702-926-4
† • 53	Vane Packet (Set of 6 Vanes)	401-42A-6	73	Thrust Ring Lock	5C1-853
54	Cylinder	401-3	74	Thrust Ring	10A902A2-932-4
55	Cylinder Dowel	HH92-74	• 75	Retaining Sleeve Spring	2U-931-4
56	Front End Plate	201-11	76	Retaining Ball (5/32" diameter steel ball)	2U-696
† 57	Front Rotor Bearing	R00H-97	77	Retaining Sleeve	2U-930-4
58	Hammer Frame Washer	1702-706	• 78	Retaining Sleeve Stop	2U-933-4
59	Hammer	1702-724A		Quick-Change Anvil Assembly (7/16" hex)	1702-A926-7
60	Hammer Frame Assembly	1702-A703A	79	Quick-Change Anvil	1702-926-7
61	Hammer Pins (2)	1702-704	80	Quick-Change Anvil Body	10A902A5-925
62	Hammer Case Assembly	2902-A727	81	Body Lock Pin	10A902A5-936
63	Hammer Case Bushing	401-641	• 82	Thrust Ring Lock	4U-933-7
*	Warning Label	WARNING-2-99	83	Thrust Ring	4U-932-7
† 64	Hammer Case Gasket	2902-36	84	Retaining Sleeve Spring	4U-931-7
65	Hammer Case Cap Screw (3)	1702-638	85	Retaining Ball (7/32" diameter steel ball)	2U-722
66	3/8" Square Drive Anvil Assembly (with Pin-Type Retainer)	1702-P726	86	Retaining Sleeve	10A902A5-930
			*	Horizontal Hanger	1901-366
† • 67	Socket Retaining Plunger	5020-716	*	Vertical Hanger	1901-365
† • 68	Retaining Plunger Spring	401-718	*	Socket Adapter (3/8" to 1/2")	2U-215
69	3/8" Square Drive Anvil Assembly (with Ring-Type Retainer)	1702-A626	*	Quick-Change Chuck	
				for 1/4" hex shank accessories	2U-A925-4
				for 7/16" hex shank accessories	502-A925-7

\* Not Illustrated.

† Indicates Tune-up Kit part.

• To keep downtime to a minimum, it is desirable to have on hand certain repair parts. We recommend that you stock one (pair or set) of each part indicated by a bullet (•) for every four tools in service.

## Parts and Maintenance

When the life of the tool has expired, it is recommended that the tool be disassembled, degreased and parts be separated by material so that they can be recycled.

Tool repair and maintenance should only be carried out by an authorized Service Center.

Refer all communications to the nearest **Ingersoll Rand** Office or Distributor.

## Related Documentation

For additional information refer to:

Product Safety Information Manual 04580916.

Product Information Manual 04584769.

Maintenance Information Manual 04584231.

Manuals can be downloaded from [ingersollrandproducts.com](http://ingersollrandproducts.com)

---

**Notes:**

**Notes:**

---

[ingersollrandproducts.com](http://ingersollrandproducts.com)

© 2014 *Ingersoll Rand*

