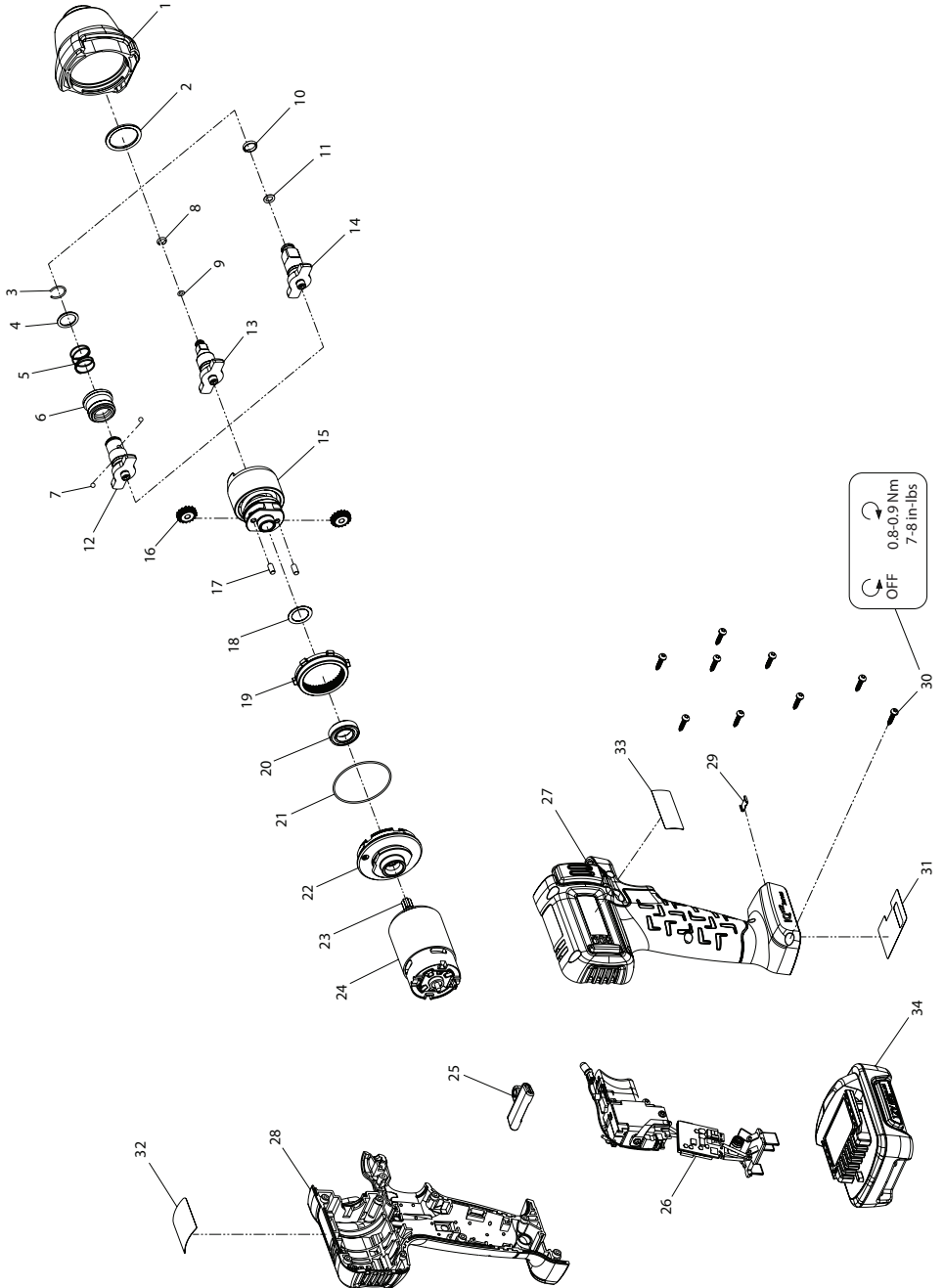


W1000 Series, Cordless Impact Wrench - Exploded View



(Dwg. 48500961)



47502731001
Edition 1
August 2013

W1000 Series, Cordless Impact Wrench - Parts List

Item	Part Description	Part Number	Item	Part Description	Part Number
*	Hammer Case Kit	W1000-K727	*	Ring Gear Holder Kit	W1000-K144
1	Hammer Case Assembly	--	20	Bearing, Gear Carrier	--
2	Washer, Plastic	--	21	O-Ring	--
*	Bit Sleeve Kit For W1110	W1110-K930	22	Ring Gear Holder	--
3	Bit Sleeve	--	*	Electric Motor Kit	W1000-K54
4	Bit Sleeve Spring	--	23	Pinion	--
5	Bit Sleeve Spacer	--	24	Motor	--
6	Bit Snap Ring	--	25	Forward/Reverse Actuator	W1000-75
7	Ball (2 Required)	--	26	Switch-LED-PCB-Battery Connector Module	W1000-K93
*	Socket Retainer Kit For W1120	W1120-K425	*	Housing Kit (includes items 27-33)	W1000-K40
8	Socket Retainer	--	27	RH Housing	--
9	O-Ring	--	28	LH Housing	--
*	Socket Retainer Kit For W1130	W1130-K425	29	Housing Clip	--
10	Socket Retainer	--	30	Screw, Housing (9 Required)	--
11	O-Ring	--	31	Information Label	--
*	Anvil Kit For W1110	W1110-K726	32	Warning Text Label	--
12	1/4" QC Anvil	--	33	Warning Symbol Label	--
*	Bit Sleeve Kit For W1110	--	34	12V Li-Ion Battery Pack	BL1203
*	Anvil Kit For W1120	W1120-K726	*	Fastener Kit (includes item 30)	W1000-K105
13	1/4" Anvil	--	*	Label Kit (includes items 31-33)	W1000-K99
*	Socket Retainer Kit For W1120	--	*	Battery Charger	BC1110
*	Anvil Kit For W1130	W1130-K726	*	Storage / Carrying Bag	IQV12-BAG
14	3/8" Anvil	--			
*	Socket Retainer Kit For W1130	--			
15	Impact Mechanism Kit	W1000-K724			
*	Planetary Gear Kit	W1000-K37			
16	Planet Gear (2 Required)	--			
17	Pin (2 Required)	--			
18	Retainer Ring	--			
19	Ring Gear	--			

* Not illustrated.

Parts and Maintenance

When the life of the tool has expired, it is recommended that the tool be disassembled, degreased and parts be separated by material so that they can be recycled.

Tool repair and maintenance should only be carried out by an authorized Service Center.

Refer all communications to the nearest **Ingersoll Rand** Office or Distributor.

Related Documentation

For additional information refer to:

Cordless Impact Wrench Product Safety Information Manual 04581146.

Cordless Impact Wrench Product Information Manual 47502730001.

Manuals can be downloaded from ingersollrandproducts.com.