

## Compresor centrífugo de aire y gas MSG-2/3

Los compresores MSG® se han diseñado a medida y fabricado para satisfacer las necesidades individuales de los clientes en una gran variedad de aplicaciones. Nuestros compresores de tipo MSG se han fabricado con componentes del caudal de aire de alta tecnología, diseñados para garantizar una instalación y un funcionamiento fáciles y de bajo coste.

### Características

#### Gas Flow Arrangement

MSG centrifugal compressors feature an advanced arrangement of gas flow components. Advantages of this arrangement include:

- Directed gas movement to reduce turbulence induced friction
- Air is cooled after every stage to provide high isothermal efficiency

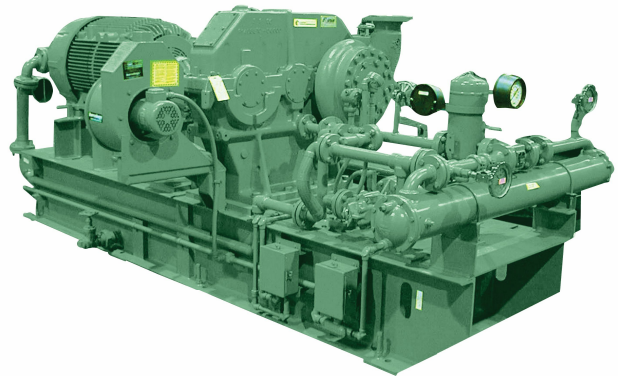
#### Air Flow Diagram

- 01: Compressor inlet
- 02: First-stage compressor volute
- 03: Coolant in
- 04: Coolant out
- 05: First-stage intercooler
- 06: Second-stage compressor volute
- 07: Second-stage intercooler
- 08: Third-stage compressor volute
- 09: Compressor discharge

#### MSG® Integrally Geared Centrifugal Compressors

MSG (multi-stage geared) compressors offer outstanding design flexibility. MSG compressors are application engineered with numerous available configurations:

- Flows from 70 to 3800 m<sup>3</sup>/min (2500 to 135,000 CFM)
- Input capacity to over 18,650 kW (25,000 hp)



- 
- Discharge pressures to 100 barg (1450 psig)

## Features

### Oil-Free Air and Gas

- Prevents system contamination
- Reduces the potential for compressed air pipeline fires caused by oil carryover
- No costly waste disposal associated with oil-laden condensate
- Eliminates the expense and maintenance of oil separation filters at the discharge

### High Reliability

- MSG centrifugal compressors are designed to be extremely reliable due to:
  - Conservative high-quality gear design
  - Long-life pinion bearing design
  - Thrust loads absorbed at low speed
  - Stainless steel compression elements

### Low Compressor Operating Life Cycle Cost

MSG centrifugal compressors provide better overall operating efficiency than positive displacement or other centrifugal compressors.

- Excellent efficiencies at full load, part load and no load
- Low maintenance cost
- Increased uptime from high-reliability design (limits the need for multiple unit installations for basic reliability reasons)
- No sliding or rubbing parts in the compression process that can cause wear and thereby efficiency loss

## Applications

### Engineered Air Applications

- Industrial gases
- Instrument air
- American Petroleum Institute (API) standards
- Soot blowers
- Large plant air
- Power industry related

### Gas Compressor Applications

- Fuel gas boosting
- Natural gas gathering
- Hydrocarbon refrigeration gas
- Carbon monoxide
- CO2 (wet or dry)
- SynGas
- Low molecular weight recycle gas
- High-pressure nitrogen

- 
- Landfill gas

## Especificaciones de los modelos

Specification	Metric	Imperial
Standard Input Power	Up to 4100 kW	Up to 5500 hp
Discharge Pressure	Up to 100 barg	Up to 1450 psig
Inlet Flow	70 to 280 m <sup>3</sup> /min	2500 to 10,000 cfm

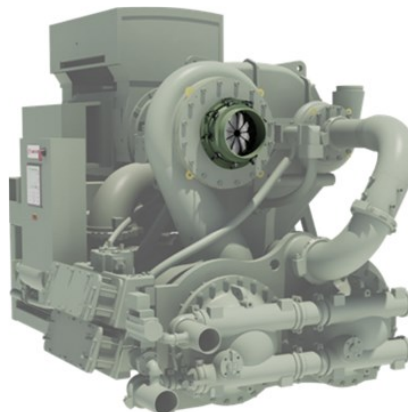
## Piezas y Accesorios



Filtros de aceite centrífugos

Field Overhaul Services

Piezas de repuesto de los  
compresores centrífugos  
Centac



Actualización: Mejoras  
aerodinámicas para los

Actualización: Álabes  
orientables de entrada



About Ingersoll Rand Inc. Ingersoll Rand Inc. (NYSE:IR), driven by an entrepreneurial spirit and ownership mindset, is dedicated to helping make life better for our employees, customers and communities. Customers lean on us for our technology-driven excellence in mission-critical flow creation and industrial solutions across 40+ respected brands where our products and services excel in the most complex and harsh conditions. Our employees develop customers for life through their daily commitment to expertise, productivity and efficiency. For more information, visit [www.IRCO.com](http://www.IRCO.com).