



## MSG<sup>®</sup> 8/9 Centrifugal Air & Gas Compressor

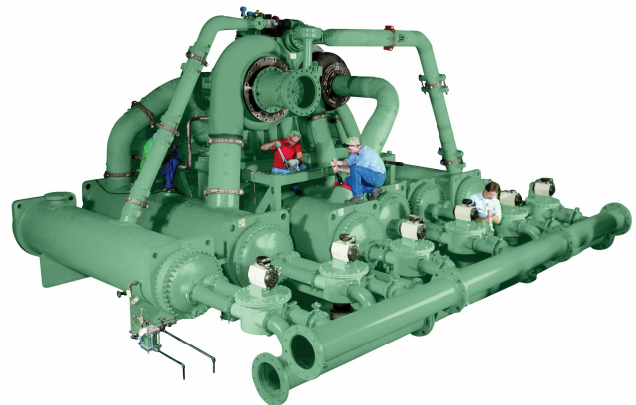
MSG compressors are custom designed and built for individual customer needs for a variety of applications. Our MSG style compressors are manufactured with a highly engineered air flow components, designed for easy, low-cost installation and operation.

### Features

#### MSG<sup>®</sup> INTEGRALLY GEARED CENTRIFUGAL COMPRESSORS

MSG (multi-stage geared) compressors offer outstanding design flexibility. MSG compressors are application engineered with numerous available configurations:

- Flows from 70 to 3800 m<sup>3</sup>/min (2500 to 135,000 CFM)
- Input capacity to over 18,650 kW (25,000 hp)
- Discharge pressures to 100 barg (1450 psig)



#### FEATURES

##### Oil-Free Air and Gas

- Prevents system contamination
- Reduces the potential for compressed air pipeline fires caused by oil carryover
- No costly waste disposal associated with oil-laden condensate
- Eliminates the expense and maintenance of oil separation filters at the discharge

##### High Reliability

MSG centrifugal compressors are designed to be extremely reliable due to:

- Conservative high-quality gear design
- Long-life pinion bearing design
- Thrust loads absorbed at low speed
- Stainless steel compression elements

---

## **Low Compressor Operating Life Cycle Cost**

MSG centrifugal compressors provide better overall operating efficiency than positive displacement or other centrifugal compressors.

- Excellent efficiencies at full load, part load and no load
- Low maintenance cost
- Increased uptime from high-reliability design (limits the need for multiple unit installations for basic reliability reasons)
- No sliding or rubbing parts in the compression process that can cause wear and thereby efficiency loss

## **APPLICATIONS**

### **Engineered Air Applications**

- Industrial gases
- Instrument air
- American Petroleum Institute (API) standards
- Soot blowers
- Large plant air
- Power industry related

### **Gas Compressor Applications**

- Fuel gas boosting
- Natural gas gathering
- Hydrocarbon refrigeration gas
- Carbon monoxide
- CO<sub>2</sub> (wet or dry)
- SynGas
- Low molecular weight recycle gas
- High-pressure nitrogen
- Landfill gas

## Model Specifications

| Specification        | Metric                          | Imperial             |
|----------------------|---------------------------------|----------------------|
| Standard Input Power | up to 7640 kW                   | up to 10,000 hp      |
| Discharge Pressure   | up to 100 barg                  | up to 1450 psig      |
| Inlet Flow           | 470 to 1005 m <sup>3</sup> /min | 16,500 to 35,500 CFM |

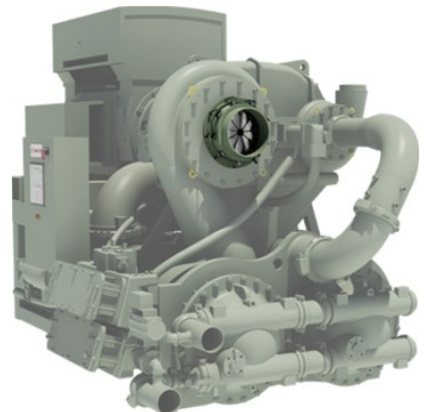
## Parts & Accessories



**MSG® Centrifugal Compressor Replacement Parts**



**Upgrade - Aerodynamic Enhancements for Centrifugal Compressors**



**Upgrade - Variable Inlet Guide Vanes for Centrifugal Compressors**



**Centrifugal Oil Filters**



**Field Overhaul Services**



About Ingersoll Rand Inc. Ingersoll Rand Inc. (NYSE:IR), driven by an entrepreneurial spirit and ownership mindset, is dedicated to helping make life better for our employees, customers and communities. Customers lean on us for our technology-driven excellence in mission-critical flow creation and industrial solutions across 40+ respected brands where our products and services excel in the most complex and harsh conditions. Our employees develop customers for life through their daily commitment to expertise, productivity and efficiency. For more information, visit [www.IRCO.com](http://www.IRCO.com).