



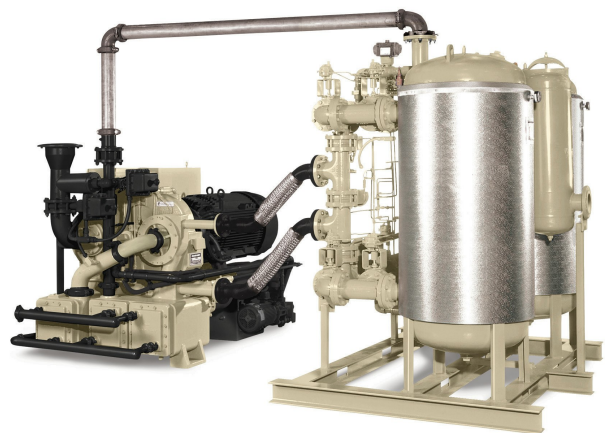
## *TURBO DryPak™ Centrifugal Air Compressor & HOC Dryer Package*

When evaluating a compressed air system, it is important to consider the total lifecycle costs, including the initial investment, energy consumption and maintenance costs. Heat-of-compression technology coupled with the inherent efficiency and reliability of a MSG® TURBO-AIR® compressor allow the TDP to deliver premium performance at a low total cost of ownership for the complete compressor/dryer package.

### Features

#### WHY TURBO DRYPAK?

- Low total costs of operation and ownership
- Minimal installation cost
- Provides dry, oil-free air as certified per ISO 8573-1
- Optional zero purge reduces operating costs
- Optional stripping and cooling cycle reduces dew point spikes
- Dryer controlled by compressor, no separate controller needed
- Complete package with minimum external connections
- No separate power requirements
- Does not require external heaters
- Does not require blower
- No dryer pre-filter is required because regenerating air is already filtered before entering the compressor
- After-filter is included in package to protect downstream process



## Model Specifications

Dryer Models	Flow Range	kW energy savings compared to a bolt-on HOC w/ external heater	Overall energy savings on operational costs	Pressure drop across dryer	Amount of desiccant per tower	Connect Sizes	Nominal amount of purge air
HCCI-1260	1050 to 1545 m <sup>3</sup> /h (620 to 910 SCFM)	5.5 kW	Relevant to dryer type comparison	0.2 barg (3 psig)	360 kg (800 lb)	DN 80 (3.0 FLG)	15 m <sup>3</sup> /h (9 SCFM)
HCCI-1820	1970 m <sup>3</sup> /h (1160 SCFM)	8 kW	Relevant to dryer type comparison	0.2 barg (3 psig)	520 kg (1145 lb)	DN 100 (4.0 FLG)	24 m <sup>3</sup> /h (14 SCFM)
HCCI-3360	2385 to 4950 m <sup>3</sup> /h (1405 to 2915 SCFM)	15 kW	Relevant to dryer type comparison	0.2 barg (3 psig)	995 kg (2110 lb)	DN 150 (6.0 FLG)	42 m <sup>3</sup> /h (25 SCFM)
HCCI-4000	5350 to 8410 m <sup>3</sup> /h (3150 to 3515 SCFM)	17.5 kW	Relevant to dryer type comparison	0.2 barg (3 psig)	1150 kg (2540 lb)	DN 150 (6.0 FLG)	51 m <sup>3</sup> /h (30 SCFM)

## Parts & Accessories



Field Overhaul Services



About Ingersoll Rand Inc. Ingersoll Rand Inc. (NYSE:IR), driven by an entrepreneurial spirit and ownership mindset, is dedicated to helping make life better for our employees, customers and communities. Customers lean on us for our technology-driven excellence in mission-critical flow creation and industrial solutions across 40+ respected brands where our products and services excel in the most complex and harsh conditions. Our employees develop customers for life through their daily commitment to expertise, productivity and efficiency. For more information, visit [www.IRCO.com](http://www.IRCO.com).