



# TURBO-GAS 6040 Centrifugal Compressor

The TURBO-GAS 6040 centrifugal compressor is great for handling landfill gas, digester gas, carbon monoxide, carbon dioxide, nitrogen, and natural gas.

## Features

### WHY CHOOSE TURBO-GAS COMPRESSORS?

- Prevents oil contamination of your system
- Reduces NOX and carbon footprint

### High Reliability

- Patented non-contacting gas seal design
- Conservative gearing design
- Stainless steel compression elements
- Patented, low-pressure hydrostatic squeeze-film pinion bearings
- Centrifugal compressors are proven to have a long mean time between failures (MTBF), and independent research has shown an industry-leading availability of 99.7%.

### Easy, Low Cost Maintenance

- Compression elements do not wear or require periodic replacement

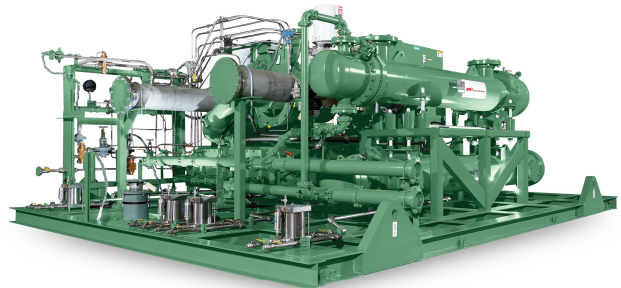
### Simple Installation

- Compact design offers minimum number of connections
- No foundations required
- Complete package ready for plug-and-play

### Proven Technology

- Since 1955, Ingersoll Rand Engineered Centrifugal Compression has manufactured more than 14,000 centrifugal compressors.

### Applications and Industries Served



- Gas Boosting
- Renewable Energy
- Air Separation
- Power Generation
- Chemical
- Petrochemicals
- Mining
- Gas Processing
- Siloxane Removal
- Multiple Process

### Gases Handled

- Landfill Gas
- Biogas
- Natural Gas
- Digester Gas
- CO
- CO2
- Nitrogen

### Additional Resources

[Typical Landfill Gas-to-Energy System \(-/media/543a721cf44643a69d0bd954e39d982e.ashx\)](#)

## Model Specifications

| Specification        | Metric            | Imperial         |
|----------------------|-------------------|------------------|
| Standard Input Power | up to 1270 kW     | up to 1700 hp    |
| Discharge Pressure   | up to 42 barg     | up to 610 psig   |
| Inlet Flow           | 127 to 167 m3/min | 4500 to 6000 CFM |

---

## Parts & Accessories



**Field Overhaul Services**



About Ingersoll Rand Inc. Ingersoll Rand Inc. (NYSE:IR), driven by an entrepreneurial spirit and ownership mindset, is dedicated to helping make life better for our employees, customers and communities. Customers lean on us for our technology-driven excellence in mission-critical flow creation and industrial solutions across 40+ respected brands where our products and services excel in the most complex and harsh conditions. Our employees develop customers for life through their daily commitment to expertise, productivity and efficiency. For more information, visit [www.IRCO.com](http://www.IRCO.com).