



# MSG<sup>®</sup> 4/5 Centrifugal Air & Gas Compressor

MSG compressors are custom designed and built for individual customer needs for a variety of applications. Our MSG style compressors are manufactured with a highly engineered air flow components, designed for easy, low-cost installation and operation.

## Features

### MSG<sup>®</sup> INTEGRALLY GEARED CENTRIFUGAL COMPRESSORS

MSG (multi-stage geared) compressors offer outstanding design flexibility. MSG compressors are application engineered with numerous available configurations:

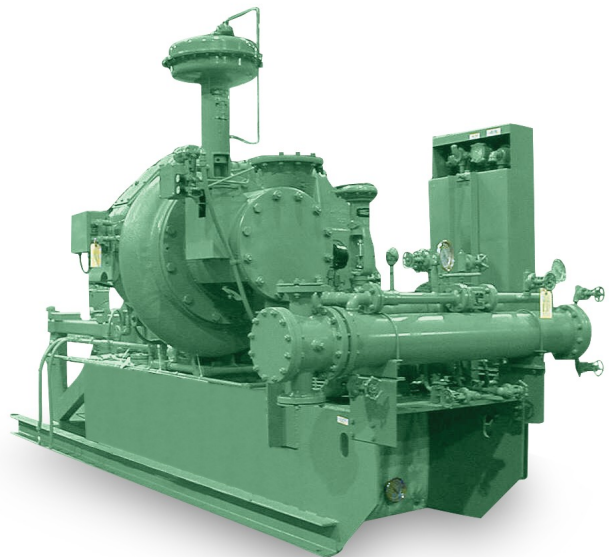
- Flows from 70 to 3800 m<sup>3</sup>/min (2500 to 135,000 CFM)
- Input capacity to over 18,650 kW (25,000 hp)
- Discharge pressures to 100 barg (1450 psig)

### FEATURES

#### Oil-Free Air and Gas

- Prevents system contamination
- Reduces the potential for compressed air pipeline fires caused by oil carryover
- No costly waste disposal associated with oil-laden condensate
- Eliminates the expense and maintenance of oil separation filters at the discharge

#### High Reliability



- 
- MSG centrifugal compressors are designed to be extremely reliable due to: Conservative high-quality gear design Long-life pinion bearing design Thrust loads absorbed at low speed Stainless steel compression elements
  - Conservative high-quality gear design
  - Long-life pinion bearing design
  - Thrust loads absorbed at low speed
  - Stainless steel compression elements

### **Low Compressor Operating Life Cycle Cost**

MSG centrifugal compressors provide better overall operating efficiency than positive displacement or other centrifugal compressors.

- Excellent efficiencies at full load, part load and no load
- Low maintenance cost
- Increased uptime from high-reliability design (limits the need for multiple unit installations for basic reliability reasons)
- No sliding or rubbing parts in the compression process that can cause wear and thereby efficiency loss



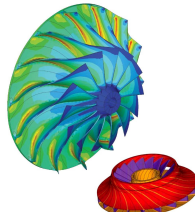
## Model Specifications

Specification	Metric	Imperial
Standard Input Power	up to 4850 kW	up to 6500 hp
Discharge Pressure	up to 100 barg	up to 1450 psig
Inlet Flow	200 to 500 m3/min	7000 to 17,700 CFM

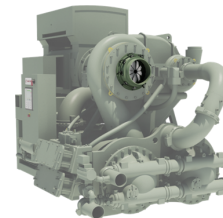
## Parts & Accessories



**MSG® Centrifugal Compressor Replacement Parts**



**Upgrade - Aerodynamic Enhancements for Centrifugal Compressors**



**Upgrade - Variable Inlet Guide Vanes for Centrifugal Compressors**



**TurboBlend 46 Premium Centrifugal Compressor Lubricant**



**Centrifugal Oil Filters**



**Field Overhaul Services**



Ingersoll Rand (NYSE:IR) advances the quality of life by creating comfortable, sustainable and efficient environments. Our people and our family of brands—including Club Car®, Ingersoll Rand®, Thermo King® and Trane®—work together to enhance the quality and comfort of air in homes and buildings; transport and protect food and perishables; and increase industrial productivity and efficiency. We are a \$14 billion global business committed to a world of sustainable progress and enduring results. For more information, visit [www.ingersollrand.com](http://www.ingersollrand.com).