



MSG[®] TURBO-AIR[®] 6040 Centrifugal Air Compressor

The MSG TURBO-AIR[®] 6040 centrifugal compressor utilizes an innovative, three-pinion design capable of delivering high pressures, making this a great fit for applications, such as nitrogen boosting and soot blowing.

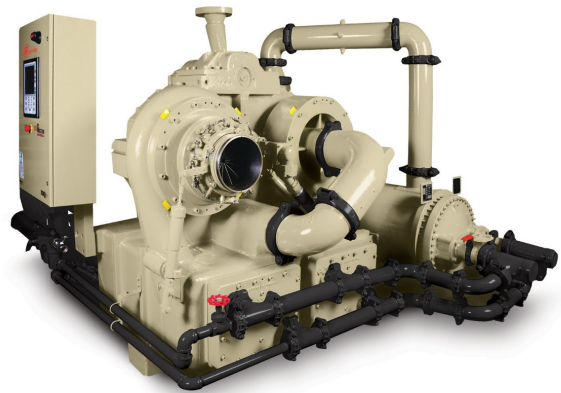
Features

EFFICIENT PACKAGE

MSG TURBO-AIR High Pressure centrifugal compressors utilize innovative three- and four-pinion designs to achieve discharge pressures up to 42 barg (610 psig). The ability to generate such high pressures make these packages a great fit for applications like soot blowing, nitrogen boosting, and PET bottle blowing. These compact compressor packages include mounted control valves, a mounted intercooler, and the MAESTRO Universal compressor control system.

ISO CERTIFIED CLASS 0

The MSG TURBO-AIR centrifugal compressor product line has been engineered to produce oil-free air for more than 60 years. This certification officially acknowledges the ability of our compressors to produce 100% oil-free air, providing our customers with enhanced quality assurance.





BENEFITS OF MSG TURBO-AIR COMPRESSORS:

ISO 8573-1 Certified Oil-Free Air

- Prevents oil contamination of your system
- Limits the potential for compressed air pipeline fires caused by oil carryover
- Eliminates costly waste disposal problems associated with oil-laden condensate
- Eliminates the expense and associated maintenance requirements of oil-removal filters, since no oil enters the compressed air stream in the compressor

Simple Installation

- True unloading capability helps to take advantage of opportunities for energy savings
- Increased uptime compared to alternative technologies translates into reduced operating life-cycle costs
- Reduced number of external connections
- Compact design reduces required floor space
- Meets OSHAs sound level requirements without sound enclosure

Low-Cost Operation

- True unloading capability helps to take advantage of opportunities for energy savings
- Increased uptime compared to alternative technologies translates into reduced operating life-cycle costs
- Excellent part-load efficiencies for any operating load
- No sliding or rubbing parts in the compression process causing wear or efficiency loss

Easy Operation

- The MAESTRO Universal control panel provides a built-in web server, allowing compressor monitoring using your local intranet
- Significant annual savings in operating cost by providing more precise control
- Easy-to-use, automatic operation

Easy Maintenance

- Compression elements do not wear or require periodic replacement
- No oil-removal filters to clean or replace
- Accessible, horizontally split gearbox for quick inspection
- Intercooler and aftercooler bundles are easy to remove for inspection and cleaning
- Water-in-tube design intercooler and aftercooler allow for simple mechanical cleaning
- Maintenance-free dry coupling

High Reliability

- Thrust loads absorbed at low speed
- Non-contacting air and oil seals

- Stainless steel compression elements
- Conservative, high-quality gear design
- Extended life pinion bearing design
- Centrifugal compressors are proven to have a long mean time between failures (MTBF), and independent research has shown an industry-leading availability of 99.7%

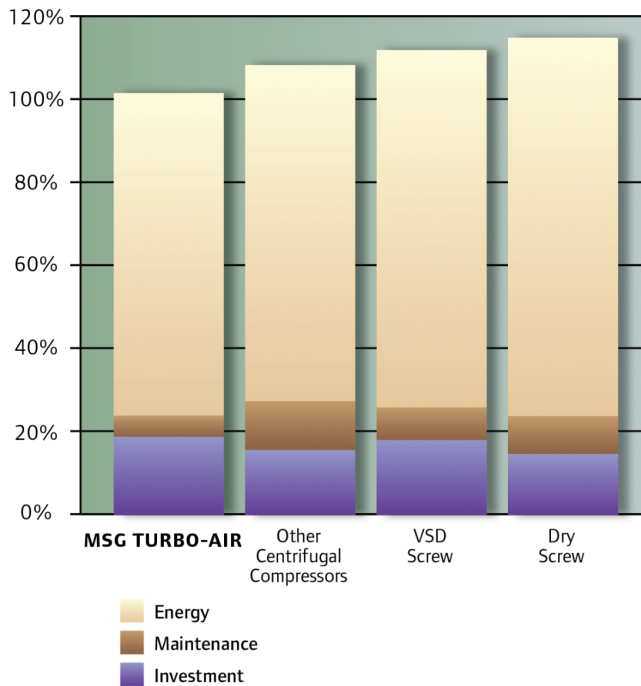
LOW TOTAL COST OF OWNERSHIP:

Over time, the energy required to power a compressed air system is the largest cost associated with a compressor; particularly in today's fluctuating energy markets. That is why, to accurately determine the return on your investment, it is important to consider the total life-cycle cost of operating the compressor, including the initial investment, energy consumption and maintenance costs.

As the chart to the right demonstrates, the MSG TURBO-AIR provides some of the lowest total lifecycle costs of any compressor, including dry screw, variable speed drive (VSD) screw and other centrifugal compressors. Compared to other machines of similar capacity, MSG TURBO-AIR compressors are one of the most efficient oil-free compressors at full load, part load and no load.

The power savings delivered can significantly speed up the payback on your initial investment, and the savings continue to build the more you use the MSG TURBO-AIR.

Life-Cycle Cost Comparison (over 10 years of operation at 80% loaded)



Model Specifications

Specification	Metric	Imperial
Standard Input Power	up to 1700 kW	up to 2250 hp
Discharge Pressure	up to 42 barg	up to 610 psig
Inlet Flow	127 to 167 m ³ /min	4500 to 6000 CFM

Parts & Accessories



MSG® TURBO-AIR® Centrifugal Compressor Replacement Parts



Field Overhaul Services



Ingersoll Rand (NYSE:IR) advances the quality of life by creating comfortable, sustainable and efficient environments. Our people and our family of brands—including Club Car®, Ingersoll Rand®, Thermo King® and Trane®—work together to enhance the quality and comfort of air in homes and buildings; transport and protect food and perishables; and increase industrial productivity and efficiency. We are a \$14 billion global business committed to a world of sustainable progress and enduring results. For more information, visit www.ingersollrand.com.