



Subsea Hydraulic Chain Hoists

6 ton - 50 ton

Specifically Designed for Underwater Use

- 30-meter operational depth!
- Fully enclosed gear box
- Quick disconnects on pendant hoses
- 100% progressive speed control
- Plug and play design
- Precise orbital hydraulic motor
- Corrosion-resistant chain and housing
- Vertical or horizontal use



Reliable, Safe Operation

Ingersoll Rand hydraulic subsea chain hoists are designed for a full range of demanding underwater and marine applications, including construction and repair, ship salvage or rig decommissioning.

Whether for commercial, military or governmental applications, our hoists can be used everywhere from oil platforms to dam construction and mining exploration sites. For example, our subsea hoists are used in positioning cofferdams to perform repairs on a ship's hull, and for removal and placement of large propellers and shafts. This avoids placing the ship in drydock, saving both significant time and expense.

Features and Benefits

- **Specifically designed for underwater use**, including 30 m operational depth, fully enclosed gearbox, and corrosion-resistant chain and housing
- **Extremely durable construction** minimises failures and repair costs
- **Compact, easy to use design for flexible operation**, including vertical or horizontal use as well as large pendant buttons that allow divers to operate while wearing gloves
- **Plug and play design**, including factory setup allowing the hoist to work out of the box
- **Simplified installation and setup**, with a disconnectable pendant and articulated lifting lugs
- **Fully progressive speed control** delivers great spotting capabilities
- **Hydraulic manifold features many safety functions**, including overload protection and quick-down valves acting as limit switches, both up and down
- **Orbital hydraulic motor** provides high torque and very precise positioning, and unlike air hoists, produces no bubbles that interfere with spotting operations
- **Cost-efficient open center valve** that operates from a very simple constant flow hydraulic power unit

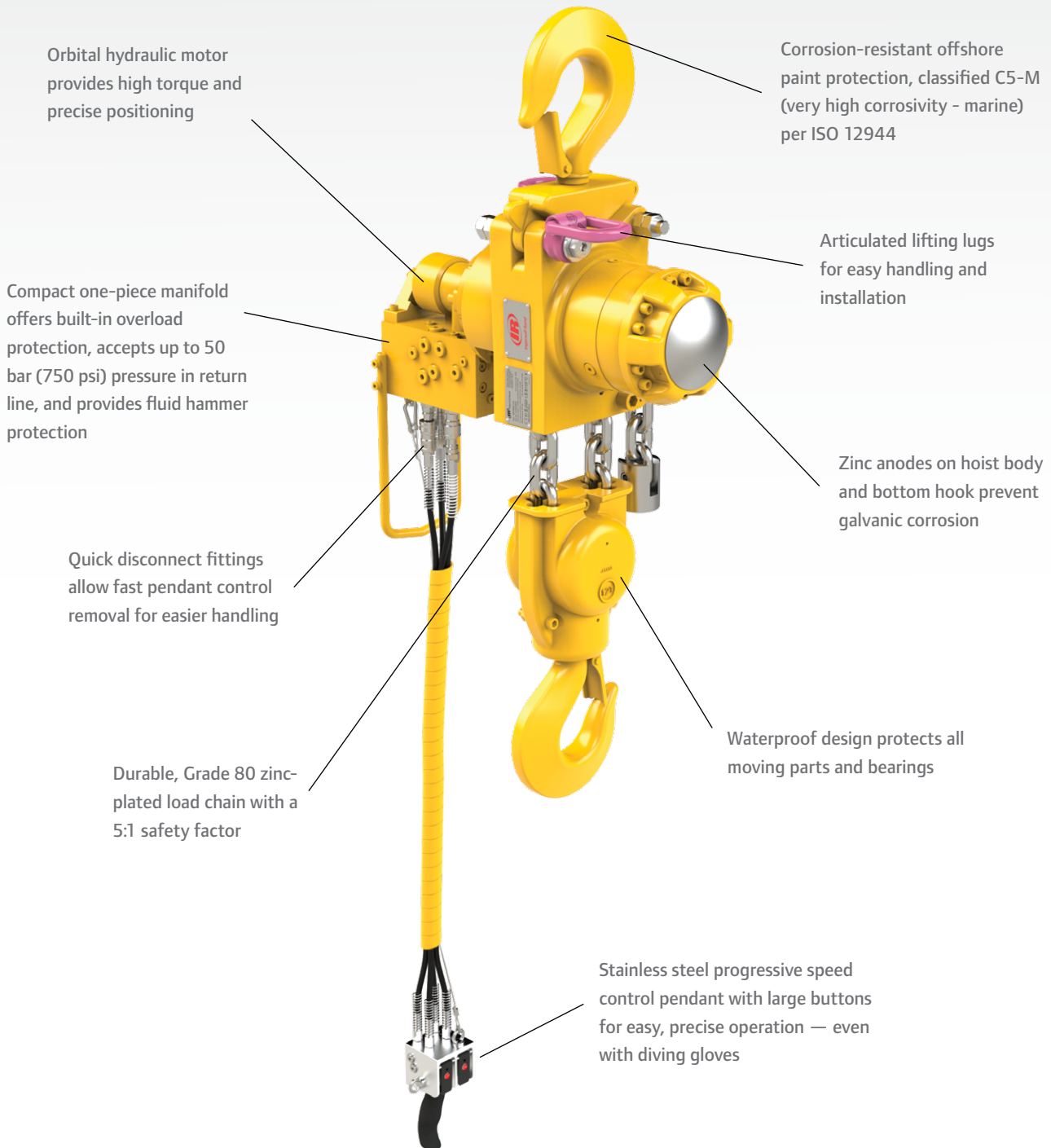
Specifications

Subsea Hydraulic Chain Hoist				
Model	SLH060S	SLH120D	SLH250D	SLH500Q
Rated capacity, metric ton	6	12	25	50
Chain falls	1	2	2	4
Chain size, mm	16 x 45	16 x 45	22 x 66	22 x 66
Maximum hoisting speed at rated load. m/min (fpm)	2.8 (9.2)	1.4 (4.6)	1.0 (3.3)	0.5 (1.6)
Maximum lowering speed at rated load. m/min (fpm)	3.0 (9.8)	1.5 (4.9)	1.1 (3.6)	0.6 (2.0)
Maximum hoisting and lowering speeds at no load, m/min (fpm)	2.8 (9.2)	1.4 (4.6)	1.0 (3.3)	0.5 (1.6)
Nominal hoisting working pressure, bar (psi)*	120 (1740)	120 (1740)	135 (1950)	135 (1950)
Recommended network pressure, bar (psi)*	140 (2030)	140 (2030)	150 (2175)	150 (2175)
Nominal flow, l/min (gpm)	40 (10.6)	40 (10.6)	50 (13.2)	50 (13.2)
Pressure port size, BSPP	3/4"	3/4"	3/4"	3/4"
Return port size, BSPP	3/4"	3/4"	3/4"	3/4"
Hoist weight with 3 m of lift, kg (lb)	185 (408)	230 (508)	555 (1225)	940 (2075)
Chain weight per additional meter of lift, kg (lb)	5.7 (12.5)	11.4 (25.0)	21.4 (47.0)	42.8 (94.0)
Maximum height of lift, m (ft)	52 (170)	49 (160)	49 (160)	24 (79)
Minimum headroom, mm (in)	717 (28.2)	945 (37.2)	1235 (48.6)	1590 (62.6)
Maximum water depth, m (ft)	30 (100)			
FEM / ISO mechanical classification	1 Bm / M3			
Coating system	Sandblasting and offshore 3-layer paint system, classified C5-M per ISO 12944			

* All performance data at 5 bar maximum back pressure in the return line. If hydraulic power unit installation has a back pressure > 5 bar, increase network and working pressure by the same value. Maximum back pressure the hoist can support is 50 bar in the return line.

Subsea Hydraulic Hoists

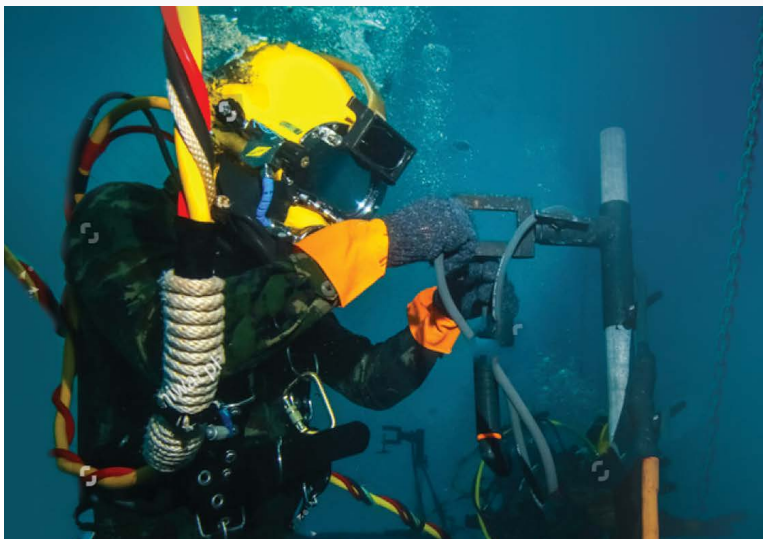
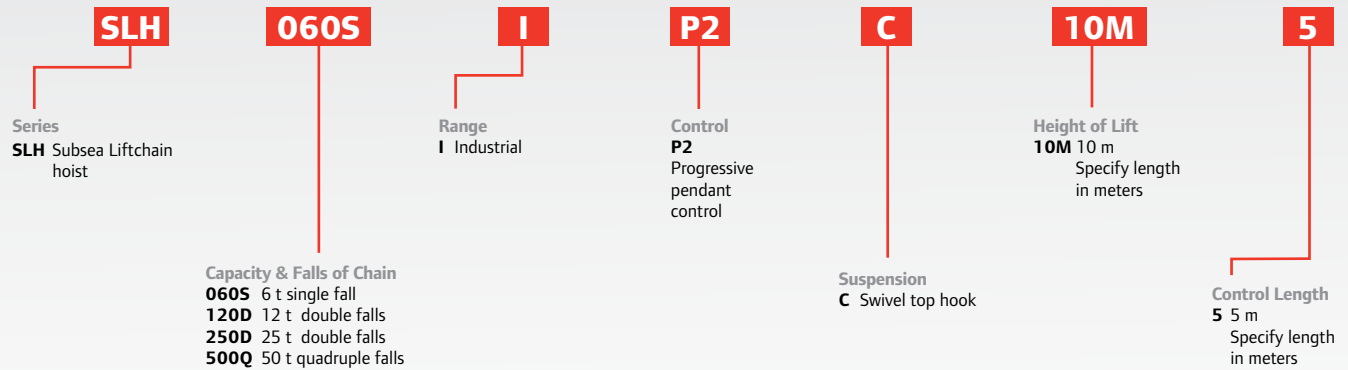
Designed for Superior Performance in Underwater Environments



Our subsea hoists have been designed with the diver in mind – easier setup and control, less maintenance and downtime, and longer operational life – saving significant time and money!

How to Order Subsea Hoists

When ordering, please specify complete model code as shown



Since 1924, Ingersoll Rand has been building extremely durable and reliable hoists and winches – and this expertise is found in every subsea hoist we manufacture. **Contact us today to learn more!**

Our Authorised Service Network



Service kits are available for fast and cost-effective maintenance.

At Ingersoll Rand®, our global network of authorised service providers are extensively trained and meet strict criteria set for their facilities, testing capabilities and inventory levels. Authorised service distributors offer many benefits to you and your business. This includes:

- Expert on-site repair
- Start-up assistance
- Product operation and load testing
- Operation and preventative maintenance
- Annual inspections
- Full-unit overhaul and recertification



For More Information www.ingersollrandproducts.com/lifting lifting@irco.com

Ingersoll Rand (NYSE:IR) advances the quality of life by creating comfortable, sustainable and efficient environments. Our people and our family of brands—including Club Car®, Ingersoll Rand®, Thermo King® and Trane®—work together to enhance the quality and comfort of air in homes and buildings; transport and protect food and perishables; and increase industrial productivity and efficiency. We are a \$14 billion global business committed to a world of sustainable progress and enduring results.

For more information, visit www.ingersollrand.com.