

MSG TURBO-AIR API

An "All-In-One" Package Solution

Complete "All-In-One" Package

Supplied as a complete and compact package with less weight and less floor space, simplifying installation, operation and maintenance.

1 Horizontally Split Gearbox

Allows for easier inspection of the working parts when jobsite maintenance policies require periodic inspection.

2 Inlet System

Available with pre-filtration or pulse jet configuration to ensure long reliability.

3 Dedicated Drive

Electric motor drive or steam turbine drive available and in compliance with demanding projects specs. API 671 coupling available as an option.

4 Inlet Guide Vanes (IGV)

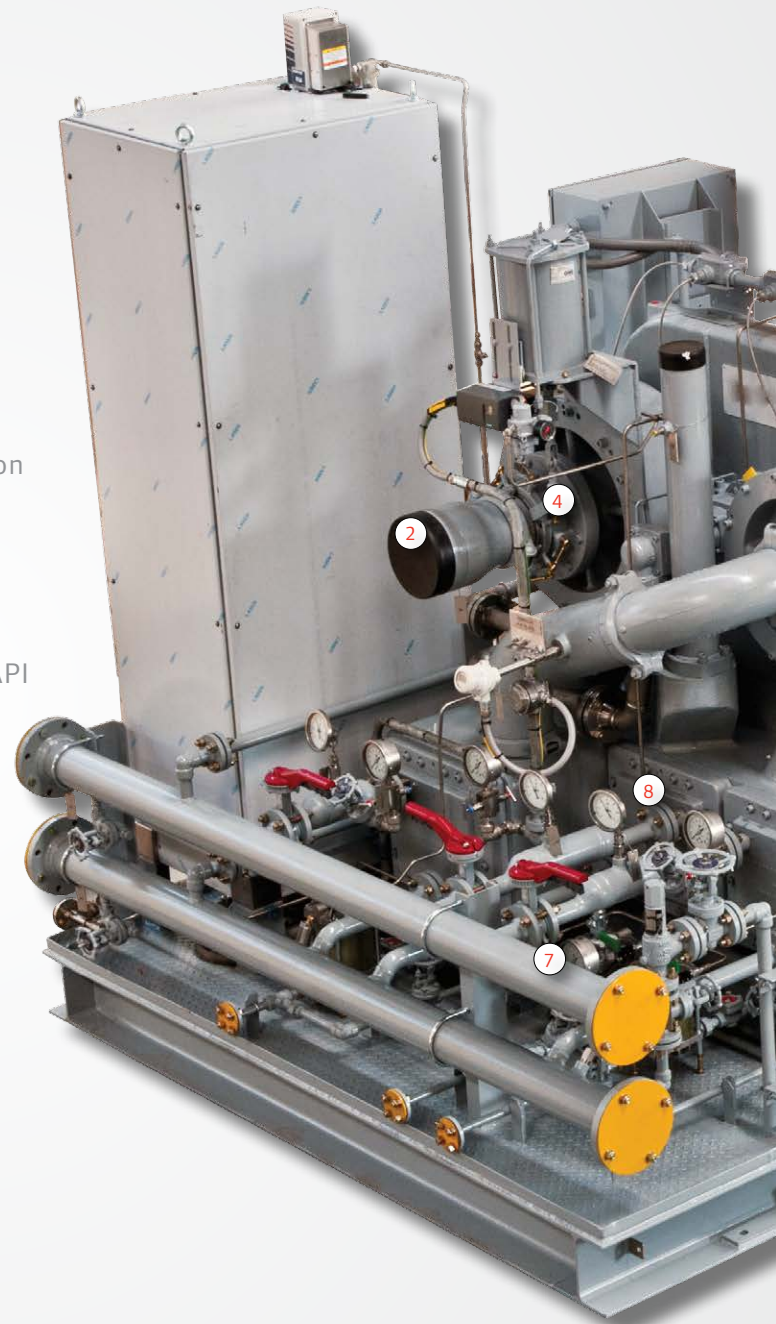
- Can offer power savings of up to 9% when operating in turndown.
- Positioned close to inducer of the impeller to maximize performance.
- Net power savings can be realized at reduced flow or on days colder than the design temperature

5 Coolers

Designed for high corrosion resistance and high cooling efficiency – decreasing pressure losses and leakages while increasing energy savings.

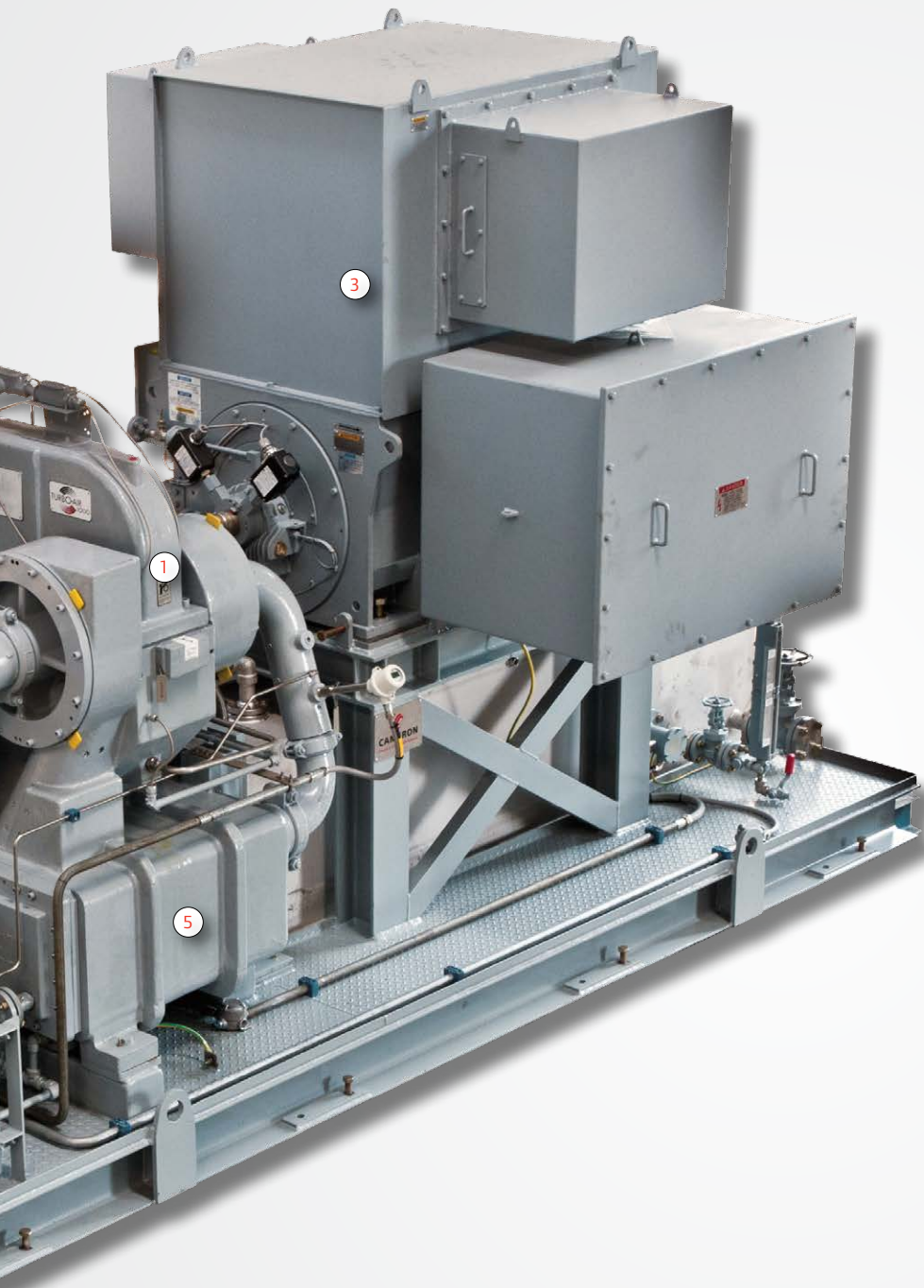
6 Complete Lubrication System

Supplied on an integrated frame according to API 614.



7 Flanged Coolant Manifold

Provides simple connections for coolant supply and return.



8 Instrumentation and Controls

Inherent variable load capability without high maintenance.