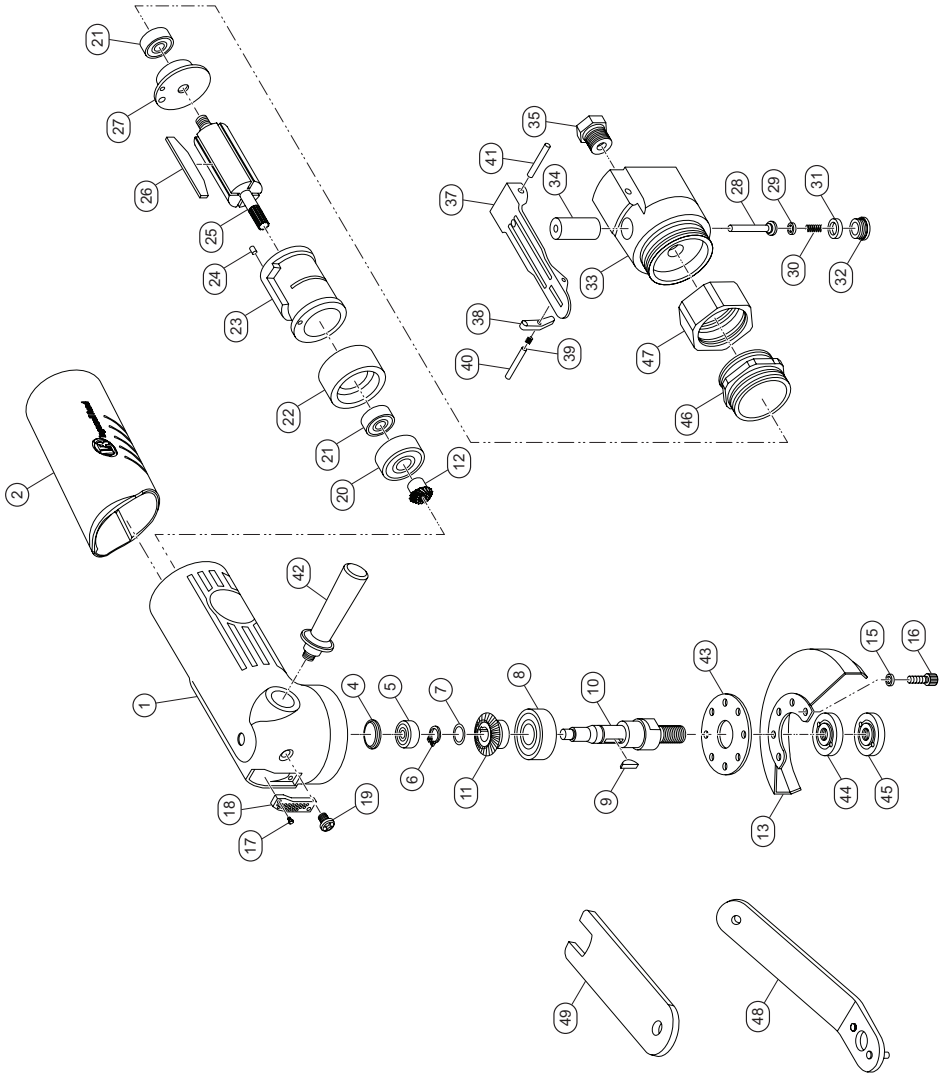


422G-A, Air Angle Grinder - Exploded View



(Dwg. TL-422-PLM-1)

422G-A, Air Angle Grinder - Parts List

Item	Part Description	Part Number	Item	Part Description	Part Number
	Housing Kit	422G-A-A40		Throttle Valve Kit	422G-A-K302
1	Main Housing	---	28	Valve Stem	---
2	Soft Grip	---	29	O-Ring	---
*	Warning Label	---	30	Spring	---
	Arbor Kit	422G-A-K105	31	O-Ring	---
4	Dust Cover	---	32	Screw Cap	---
5	Bearing	---		Throttle Valve Housing Assembly	422G-A-A409
6	E-clip	---	33	Rear Housing	---
7	Spacer	---	34	Brass Bushing	---
8	Bearing	---	35	Air Inlet	---
9	Woodruff Key	---	*	Nameplate Label	---
10	Spindle	---		Throttle Lever Assembly	422G-A-A400
	Bevel Gear Kit	422G-A-K552	37	Trigger	---
11	Gear	---	38	Lever Block	---
12	Gear	---	39	Spring	---
	Wheel Guard Kit	422G-A-K106-5	40	Bolt	---
13	Metal Guard	422G-A-106	41	Trigger Bolt	---
*	Guard Warning Label	LA421B-EU-99G	42	Handle	422G-A-48
	Guard Screw Kit	422G-A-K638	43	Gasket	422G-A-83
15	Spacer (Qty 4)	---	44	Rear Flange Nut	422G-A-27
16	Cap Screw (Qty 4)	---	45	Front Flange Nut	422G-A-305
	Exhaust Deflector Kit	422G-A-K23	46	Fixing Ring	422G-A-588
17	Screw (Qty 2)	---	47	Connecting Nut	422G-A-304
18	Muffler	---	48	Pin Wrench	422G-A-69
19	Screw	---	49	Wrench	422G-A-26
	Tune-up Kit	422G-A-TK			
20	Bearing	---			
21	Bearing (Qty 2)	---			
22	Front Plate	---			
23	Cylinder	---			
24	Bolt	---			
25	Rotor	---			
26	Rotor Blade (Qty 4)	---			
27	Rear Plate	---			

* Indicates not illustrated.

Parts and Maintenance

When tool life has expired, it is recommended that the tool be disassembled, degreased and parts separated by material for proper recycling.

Tool repair and maintenance should only be carried out by an authorized Service Center.

Refer all communications to the nearest **Ingersoll Rand** office or distributor.

Related Documentation

Manuals can be downloaded from ingersollrand.com

For additional information, refer to:

Product Safety Information Manual 04584959

Product Information Manual TL-422-PIM

Declaration of Conformity TL-422-DOC

