



Mechanical Pulse Tool

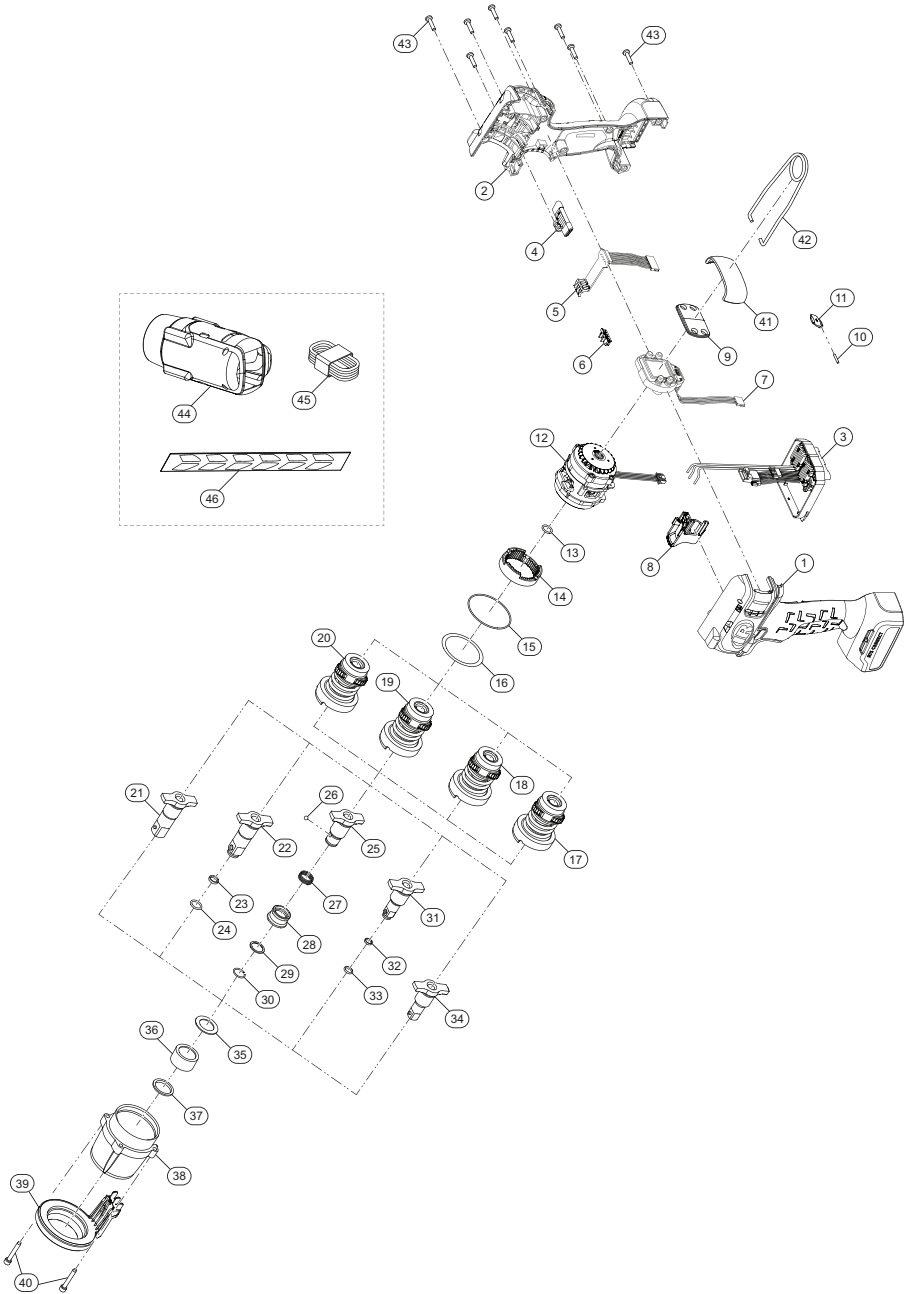
**RTS Series: RTS025PQ4, RTS060PH6, RTS060PH8,
RTS060PS6, RTS060PS8, RTS140PH8, RTS140PS8,
RTS225PH8 and RTS225PS8**

Parts Information



Save These Instructions

RTS Series: RTS025PQ4, RTS060PH6, RTS060PH8, RTS060PS6, RTS060PS8, RTS140PH8, RTS140PS8, RTS225PH8, and RTS225PS8, Mechanical Pulse Tool - Exploded View



(Dwg. TL-RTS-PLM-1)

RTS Series: RTS025PQ4, RTS060PH6, RTS060PH8, RTS060PS6, RTS060PS8, RTS140PH8, RTS140PS8, RTS225PH8, and RTS225PS8, Mechanical Pulse Tool - Parts List

Item	Part Description	Part Number (CCN)
	Housing Kit	TK-RTS-040
1	Left Housing	---
2	Right Housing	---
9	Back Cap	---
10	USB Door Pin	---
11	USB Door	---
40	Hammer Case Screw (4 required)	---
43	Housing Screw (8 required)	---
	Switch Kit	TK-RTS-250
4	Directional Switch	---
8	Trigger	---
	Display Protector Kit	TK-RTS-441
41	Display Protector	---
	Suspension Bail Kit	VP1-365 (48382147)
42	Suspension Bail	---
	Fastener Kit	TK-RTS-HWK
40	Hammer Case Screw (4 required)	---
43	Housing Screw (8 required)	---
	LED Kit	TK-RTS-KLED
39	LED Assembly	---
	Hammer Case and LED Kit	TK-RTS-727
35	Hammer Case Thrust Washer	---
36	Hamer Case Bearing	---
37	Hammer Case Seal	---
39	LED Assembly	---
40	Hammer Case Screw (4 required)	---
	Socket Retainer Kit for 1/2" Square Drive	2125QTI-K425 (80107733)
23	O-Ring	---
24	Socket Retainer	---
	Socket Retainer Kit for 3/8" Square Drive	1702-K425 (47533407001)
32	O-Ring	---
33	Socket Retainer	---
	Anvil Kit for RTS025PQ4, 1/4" Quick Change	TK-RTS-926
25	1/4" Hex Anvil	---
26	Ball	---
27	Spring	---
28	Bit Sleeve	---
29	Washer	---
30	Snap Ring	---
	Anvil Kit for RTS060PH6, Hog Ring/Thru Hole 3/8" Square Drive	TK-RTS-626-H6
31	3/8" Square Drive Anvil	---
32	O-Ring	---
33	Socket Retainer	---
	Anvil Kit for RTS060PH8, RTS140PH8, RTS225PH8, Hog Ring/Thru Hole 1/2" Square Drive	TK-RTS-626-H8
22	1/2" Square Drive Anvil	---
23	O-Ring	---
24	Socket Retainer	---

Item	Part Description	Part Number (CCN)
	Anvil Kit for RTS060PS6, Pin Anvil 3/8" Square	TP-RTS-726-S6
34	3/8" Pin Anvil	---
	Anvil Kit for RTS060PS8, RTS140PS8, RTS225PS8, Pin Anvil 1/2" Square	TP-RTS-726-S8
21	1/2" Pin Anvil	---
17	Mechanism Kit for RTS025PQ4	TK-RTS-675A
18	Mechanism Kit for RTS060PS6, RTS060PH6, RTS060PS8, and RTS060PH8	TK-RTS-675B
19	Mechanism Kit for RTS140PS8 and RTS140PH8	TK-RTS-675C
20	Mechanism Kit for RTS225PS8 and RTS225PH8	TK-RTS-675D
	Backcap Kit	TK-RTS-144
9	Backcap	---
	Communication and Display Assembly Kit	TK-RTS-499-2
7	Communication Board	---
	Trigger Board Kit	TK-RTS-499-5
5	Trigger Board	---
	Motor Kit	TK-RTS-MRK
12	Motor	---
	Drive Kit	TK-RTS-DRK
3	Drive	---
	Gear Kit	TK-RTS-GRK
*	Gear Pin	---
*	Planet Gear	---
14	Ring Gear	---
	USB Kit	TK-RTS-USB
45	USB Cable	---
	Seal Kit	TK-RTS-OSK
13	O-Ring	---
15	Hammer Case O-Ring	---
16	Hammer Case Washer	---
	Tool Label Kit	VP1-300 (47105416)
46	Tool Label	---
	Boot	---
44	Boot, Red	TP-RTS-BOOT-RD
*	Boot, Green	TP-RTS-BOOT-GR
*	Boot, Blue	TP-RTS-BOOT-BL
*	Boot, White	TP-RTS-BOOT-WH
*	Boot, Gray	TP-RTS-BOOT-GY
*	Boot, Orange	TP-RTS-BOOT-OR
	20V Li-ion Battery Pack	---
*	2.5 Ah	BL2012 (47515903001)
	5.0 Ah	BL2022 (47515902001)
	Battery Charger	---
*	Battery Charger, Single Bay	BC1121 (47507879001)
	Battery Charger, Dual Bay	BC1221
	Protective Battery Boot	---
*	For 2.5 Ah & 2.8 Ah Batteries	BL2005-BOOT (47510965001)
	For 5.0 Ah & 5.6 Ah Batteries	BL2010-BOOT (47510964001)
	Grease	---
*	IR # 105 (4 oz. tube) for Impact Mechanism and Anvil	105-4T (04616116)
	IR # 105 (1 lb can) for Impact Mechanism and Anvil	105-1LB (04279147)

Item	Part Description	Part Number (CCN)
*	Grease Gun	R000A2-228 (03095015)
*	Storage/Carrying Bag	TB4 (47543666001)

* Indicates not illustrated.

Parts and Maintenance

When tool life has expired, it is recommended that the tool be disassembled, degreased and parts separated by material for proper recycling.

Tool repair and maintenance should only be carried out by an Authorized Service Center.

Refer all communications to the nearest **Ingersoll Rand** office or distributor.

Related Documentation

Manuals can be downloaded from ingersollrand.com

For additional information, refer to:

Product Safety Information Manual TL-RTS-SIM

Product Information Manual TL-RTS-PIM

CE-Declaration of Conformity TL-RTS-DOC

UK-Declaration of Conformity TL-RTS-DOC-UK

Notes:

Notes:

[ingersollrand.com](https://www.ingersollrand.com)

© 2024 *Ingersoll Rand*

