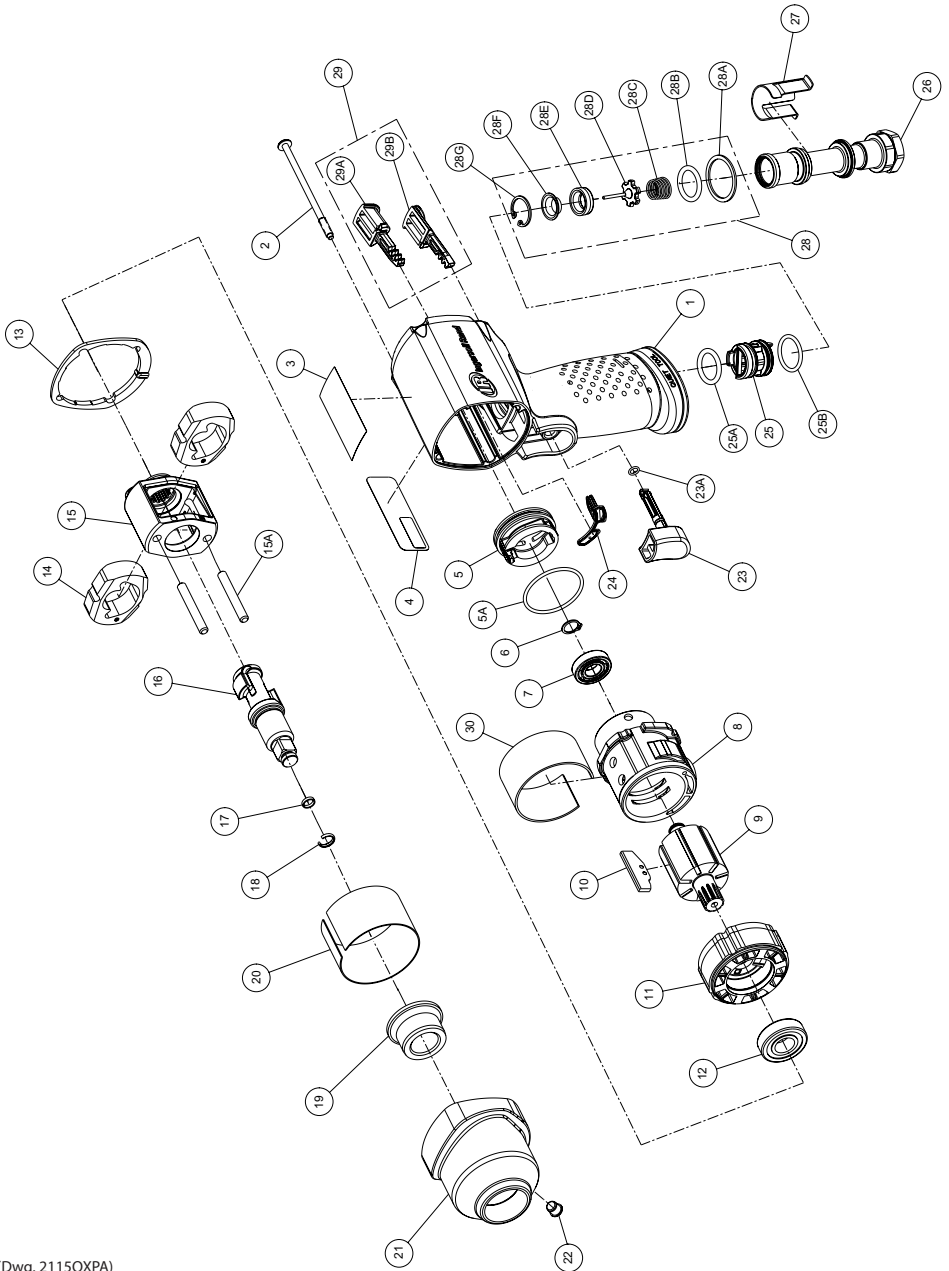


2115QXPA Air Impactool™ - Exploded View



(Dwg. 2115QXPA)



## 2115QXPA Air Impactool™ - Parts List

| Item | Part Description                               | Part Number  | (CCN)          | Item | Part Description                       | Part Number | (CCN)      |
|------|--|--------------|----------------|------|--|-------------|------------|
|      | Housing Assembly                               | 2115QXPA-A40 | (2115QXPA-A40) |      | Reverse Valve Assembly                 | 2131-A329   | (04167896) |
| 1    | Housing  | ---          | ---            | 25   | Reverse Valve                          | ---         | ---        |
| 3    | Warning Label                                  | ---          | ---            | 25A  | O-Ring, Reverse Valve (Top-Black)      | ---         | ---        |
| 4    | Information Label                              | ---          | ---            | 25B  | O-Ring, Reverse Valve (Bottom-Blue)    | ---         | ---        |
| 24   | Gasket, Motor                                  | ---          | ---            |      | Inlet Bushing Assembly                 | 2135-D565A  | (45531787) |
|      | Reverse Valve Assembly (includes 25, 25A, 25B) | ---          | ---            | 26   | Inlet Bushing                          | ---         | ---        |
| 29   | Button Kit                                     | ---          | ---            | 27   | Inlet Clip                             | 2131-57     | (04167862) |
| 2    | Screw, Hammer Case (4 required)                | 2115-638     | (80126170)     | 28   | Inlet Parts Kit                        | 2135-K303   | (45535051) |
| 3    | Warning Label                                  | WARNING-2-99 | (04203139)     | 28A  | Washer                                 | ---         | ---        |
| 4    | Information Label                              | 2115QXPA-300 | (2115QXPA-300) | 28B  | O-Ring, Seal                           | ---         | ---        |
|      | Power Regulator Assembly                       | 2115-D249A   | (45561735)     | 28C  | Throttle Spring                        | ---         | ---        |
| 5    | Power Regulator                                | ---          | ---            | 28D  | Throttle Valve                         | ---         | ---        |
| 5A   | O-Ring, Power Regulator                        | ---          | ---            | 28E  | Valve Seat                             | ---         | ---        |
| 6    | Retaining Ring                                 | 4E-6         | (03079530)     | 28F  | Seat Support                           | ---         | ---        |
| 7    | Ball Bearing (Cylinder)                        | R00H-97      | (03100021)     | 28G  | Retainer                               | ---         | ---        |
| 8    | Cylinder                                       | 2112-3       | (04679056)     | 29   | Button Kit                             | 2115-K75RD  | (45583465) |
| 9    | Rotor  | 2115-53      | (45504990)     | 29A  | Forward Button                         | ---         | ---        |
| †10  | Vane Pack (set of 7)                           | 2115-42A-7   | (45583473)     | 29B  | Reverse Button                         | ---         | ---        |
| 11   | End Plate                                      | 2112-11      | (04679064)     | 30   | Silencer                               | 2115Q-311   | (45587342) |
| 12   | Ball Bearing (End Plate)                       | 2131-97      | (04172813)     | *    | Tune-Up Kit                            | 2115-TK2    | (45585189) |
| †13  | Hammer Case Gasket                             | 2115-36      | (45550779)     | 5A   | O-Ring, Power Regulator                | ---         | ---        |
|      | Hammer Mechanism Kit                           | 2115-THK2    | (45585932)     | 6    | Retaining Ring                         | ---         | ---        |
| 14   | Hammer (2)                                     | ---          | ---            | 7    | Ball Bearing (Cylinder)                | ---         | ---        |
| 15   | Hammer Frame                                   | ---          | ---            | 10   | Vane Pack (set of 7)                   | ---         | ---        |
| 15A  | Hammer Pin (2)                                 | ---          | ---            | 12   | Ball Bearing (End Plate)               | ---         | ---        |
|      | Anvil Assembly                                 | 2112-A626    | (10319895)     | 13   | Hammer Case Gasket                     | ---         | ---        |
| 16   | Anvil  | ---          | ---            | 23A  | O-Ring, Trigger                        | ---         | ---        |
| 17   | O-Ring   | ---          | ---            | 24   | Gasket, Motor                          | ---         | ---        |
| 18   | Socket Retainer                                | ---          | ---            | 25A  | O-Ring, Reverse Valve (Top-Black)      | ---         | ---        |
| †    | Socket Retainer Kit                            | 2115-K425    | (80107659)     | 25B  | O-Ring, Reverse Valve (Bottom-Blue)    | ---         | ---        |
| 17   | O-Ring   | ---          | ---            | 28   | Inlet Parts Kit                        | ---         | ---        |
| 18   | Socket Retainer                                | ---          | ---            | *    | Kit, Piped-Away Exhaust                | 2115-K284   | (45612637) |
| 19   | Bushing, Hammer Case                           | 2112-641     | (04679114)     | *    | Inlet Clip Removal Tool                | 2131-322    | (04263745) |
|      | Hammer Case Assembly                           | 2115AL-D727A | (45586443)     | †*   | Air Care Kit (grease gun, grease, oil) | 115-LBK1    | (04616108) |
| 19   | Bushing, Hammer Case                           | ---          | ---            | *    | Grease (replacement tube for -LBK1)    | 115-4T      | (04616157) |
| 20   | Sleeve, Hammer Case                            | ---          | ---            | *    | Air Tool Oil (4 oz. bottle)            | 10Z4        | (03875671) |
| 21   | Hammer Case                                    | ---          | ---            | *    | Grease (1 lb can)                      | 105-1LB     | (04279147) |
| 22   | Grease Fitting                                 | ---          | ---            | *    | Grease (8 lb can)                      | 105-8LB     | (04264875) |
| 22   | Grease Fitting                                 | 1305R-188    | (03039930)     | *    | Grease Gun                             | R000A2-228  | (03095015) |
| †    | Trigger Assembly                               | 2135-D93     | (80096704)     |      |  |             |            |
| 23   | Trigger  | ---          | ---            |      |  |             |            |
| 23A  | O-Ring, Trigger                                | ---          | ---            |      |  |             |            |
| †24  | Gasket, Motor                                  | 2112-283     | (04679015)     |      |  |             |            |

\* Indicates not illustrated.

† Indicates common-wear parts. Maintain stock to reduce downtime.

### Parts and Maintenance

When tool life has expired, it is recommended that the tool be disassembled, degreased and parts separated by material for proper recycling.

Tool repair and maintenance should only be carried out by an authorized Service Center.

Refer all communications to the nearest **Ingersoll Rand** office or distributor.

### Related Documentation

Manuals can be downloaded from [ingersollrandproducts.com](http://ingersollrandproducts.com)

For additional information, refer to:

Product Safety Information Manual 04580916.

Product Information Manual 47598152001.

