



MSG® TURBO- AIR® 6040 Centrifugal Air Compressor

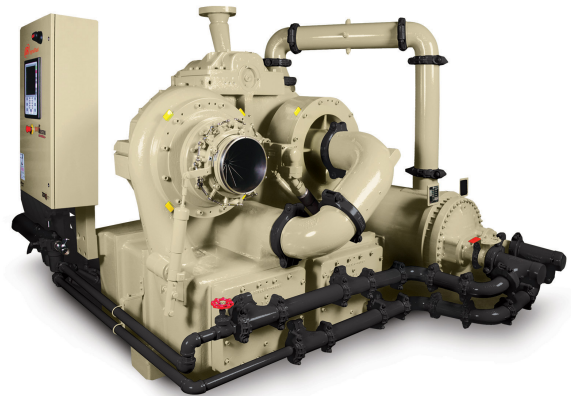
The MSG TURBOAIR® 6040 centrifugal compressor utilizes an innovative, three-pinion design capable of delivering high pressures, making this a great fit for applications, such as nitrogen boosting and soot blowing.

Features

EFFICIENT PACKAGE

MSG TURBOAIR High Pressure centrifugal compressors utilize innovative three- and four-pinion designs to achieve discharge pressures up to 42 barg (610 psig). The ability to generate such high pressures make these packages a great fit for applications like soot blowing, nitrogen boosting, and PET bottle blowing.

These compact compressor packages include mounted control valves, a mounted intercooler, and the MAESTRO universal compressor control system.



BENEFITS OF MSG TURBO-AIR COMPRESSORS:

ISO 8573-1 Certified Oil-Free Air

- Prevents oil contamination of your system
- Limits the potential for compressed air pipeline fires caused by oil carryover
- Eliminates costly waste disposal problems

associated with oil-laden condensate

- Eliminates the expense and associated maintenance requirements of oil-removal filters, since no oil enters the compressed air stream in the compressor

Model Specifications

Simple Installation

- True unloading capability helps to take advantage of opportunities for energy savings
- Increased uptime compared to alternative technologies translates into reduced operating life-cycle costs
- Reduced number of external connections
- Compact design reduces required floor space
- Meets OSHA's sound level requirements without sound enclosure

Specification	Metric	Imperial
Standard Input Power	up to 1700 kW	up to 2250 hp
Discharge Pressure	up to 42 barg	up to 610 psig
Inlet Flow	127 to 167 m ³ /min	4500 to 6000 CFM

Low-Cost Operation

- True unloading capability helps to take advantage of opportunities for energy savings
- Increased uptime compared to alternative technologies translates into reduced operating life-cycle costs
- Excellent part-load efficiencies for any operating load
- No sliding or rubbing parts in the compression process

causing wear or efficiency loss

EasyOperation

- The MAESTRO™ Universal control panel provides a built-in web server, allowing compressor monitoring using your local intranet/ span>
- Significant annual savings in operating cost by providing more precise control
- Easy-to-use, automatic operation

EasyMaintenance

- Compression elements do not wear or require periodic replacement
- No oil-removal filters to clean or replace
- Accessible, horizontally split gearbox for quick inspection
- Intercooler and aftercooler bundles are easy to remove for inspection and cleaning
- Water-in-tube design intercooler and aftercooler allow for simple mechanical cleaning
- Maintenance-free dry coupling

High Reliability

- Thrust loads absorbed at low speed
- Non-contacting air and oil seals
- Stainless steel compression elements

- Conservative, high-quality gear design
- Extended life pinion bearing design
- Centrifugal compressors are proven to have a long mean time between failures (MTBF), and independent research has shown an industry-leading availability of 99.7%

LOW TOTAL COST OF OWNERSHIP:

Over time, the energy required to power a compressed air system is the largest cost associated with a compressor; particularly in today's fluctuating energy markets. That is why, to accurately determine the return on your investment, it is important to consider the total life-cycle cost of operating the compressor, including the initial investment, energy consumption and maintenance costs.

As the chart to the right demonstrates, the MSG TURBOAIR provides some of the lowest total lifecycle costs of any compressor, including dry screw, variable speed drive (VSD) screw and other centrifugal compressors.

Compared to other machines of similar capacity, MSG TURBOAIR compressors are one of the most efficient oil-free compressors at full load, part load and no load.

The power savings delivered can significantly speed up the payback on your initial investment, and the savings continue to build the more you use the MSG TURBO-AIR.



About Ingersoll Rand Inc. Ingersoll Rand Inc. (NYSE:IR) driven by an entrepreneurial spirit and ownership mindset, is dedicated to helping make life better for our employees, customers and communities. Customers lean on us for our technology-driven excellence in mission-critical flow creation and industrial solutions across 40+ respected brands where our products and services excel in the most complex and harsh conditions. Our employees develop customers for life through their daily commitment to expertise, productivity and efficiency. For more information, visit www.IRCO.com.